

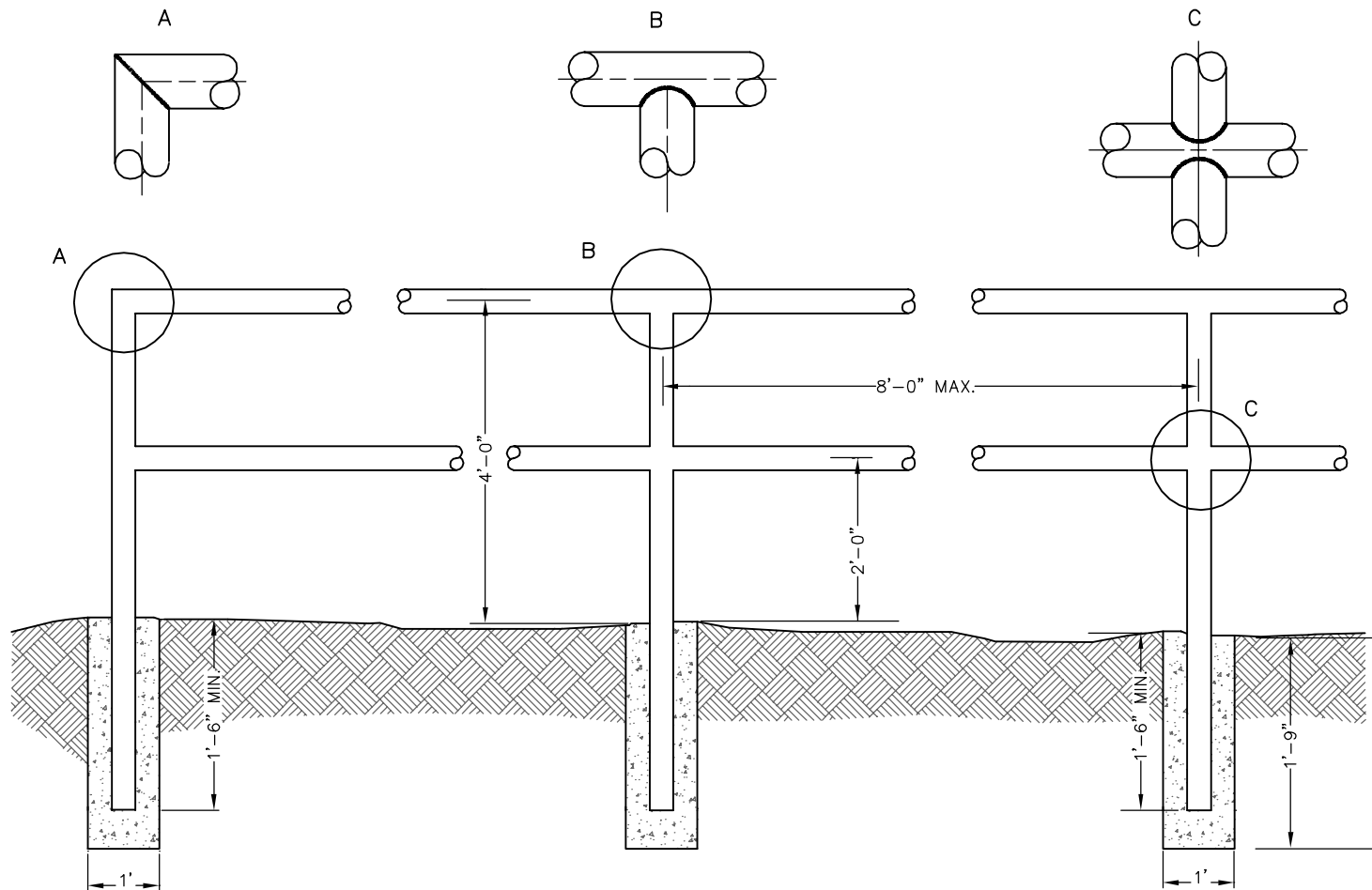
NOT TO SCALE



TOWN OF PINEVILLE
LAND DEVELOPMENT
STANDARDS

TYPICAL CONCRETE CONTROL MONUMENT

STD. NO.	REV.
50.03	



GENERAL NOTES:

1. ALL CONCRETE TO BE 3600 P.S.I. COMPRESSIVE STRENGTH.
2. TYPE OF PIPE TO BE USED IS 1-5/8" MAX. O.D. BLACK IRON, LOW CARBON PIPE OR GALVANIZED.
3. ALL JOINTS TO HAVE A 1/2" FILLET WELD AT ALL JOINTS.
4. AFTER INSTALLATION PAINT ASSEMBLY WITH BLACK ALL WEATHER ENAMEL.
5. SEE PLDS 50.04-B FOR WARRANTS

NOT TO SCALE



TOWN OF PINEVILLE
LAND DEVELOPMENT
STANDARDS

SAFETY RAIL

STD. NO.	REV.
50.04A	

WARRANTS

STANDARD SAFETY RAIL (PLDS #50.04A) SHALL BE INSTALLED UNDER ANY OF THE FOLLOWING CIRCUMSTANCES IN BOTH NEW CONSTRUCTION AND IN RETROFITTING OR RECONSTRUCTION OF EXISTING ROADWAYS OR SITES:

1. WHEN THE CULVERT CROSSING DETAIL (PLDS #10.36A-B) APPLIES.
2. IF THERE IS A TWO FOOT OR GREATER DROPOFF WITHIN 2 FEET OF THE EDGE OF THE SIDEWALK (SEE DIAGRAM A).
3. IF THERE IS A 1-FOOT OR LARGER DROPOFF DIRECTLY ADJACENT TO THE SIDEWALK EDGE (SEE DIAGRAM B).
4. AT THE TOP OF ANY DROPOFF WITHIN THE PEDESTRIAN CLEAR ZONE OR WHERE PEDESTRIANS CAN REASONABLY BE EXPECTED IN THE VICINITY.
5. AT THE DIRECTION OF THE TOWN ENGINEER BASED ON FIELD CONDITIONS.

DEFINITIONS

DROPOFF -- A SLOPE OF 2:1 OR STEEPER. EXAMPLES INCLUDE HEADWALLS, RETAINING WALLS, AND CULVERTS.

PEDESTRIAN CLEAR ZONE -- 10 FEET OF ANY COMBINATION OF SIDEWALK, SLOPE, AND SHOULDER SLOPED AT 6:1 OR FLATTER. SIDEWALK DOES NOT NEED TO BE PRESENT.

SIDEWALK -- FOR PURPOSES OF THIS STANDARD, THE TERM "SIDEWALK" IS USED GENERICALLY AND SHALL MEAN ANY PATH OR SURFACE TO BE USED FOR BICYCLE AND/OR PEDESTRIAN TRANSPORTATION. EXAMPLES INCLUDE, BUT ARE NOT LIMITED TO, SIDEWALKS, BIKE PATHS, SHARED-USE PATHS, PEDESTRIAN PATHS, AND GREENWAYS.

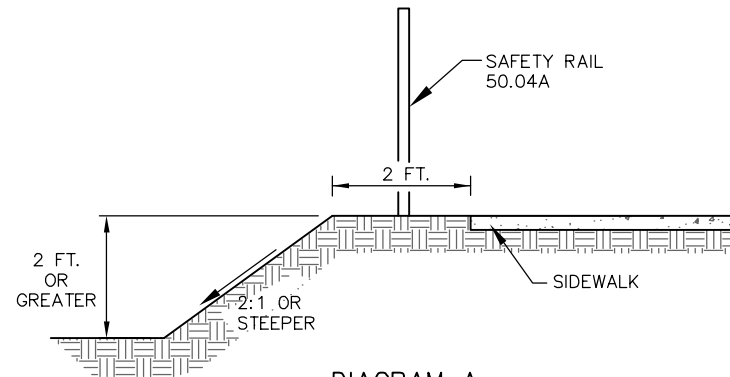


DIAGRAM A

SLOPED DROPOFF AT BACK OF SIDEWALK

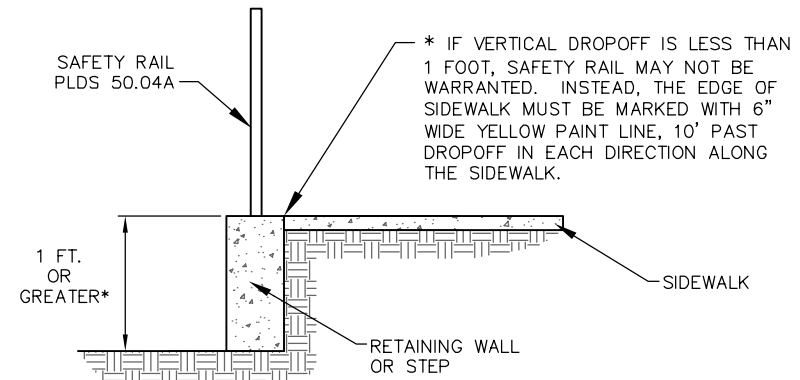


DIAGRAM B

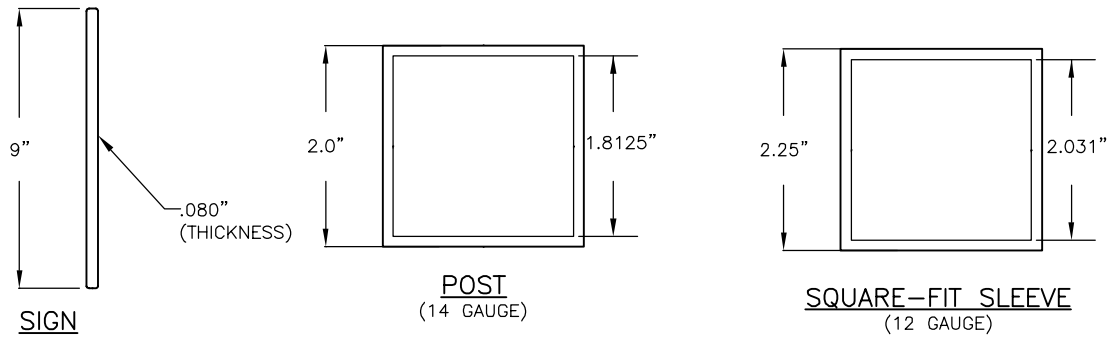
VERTICAL DROPOFF AT BACK OF SIDEWALK



TOWN OF PINEVILLE
LAND DEVELOPMENT
STANDARDS

SAFETY RAIL WARRANTS

STD. NO.	REV.
50.04B	

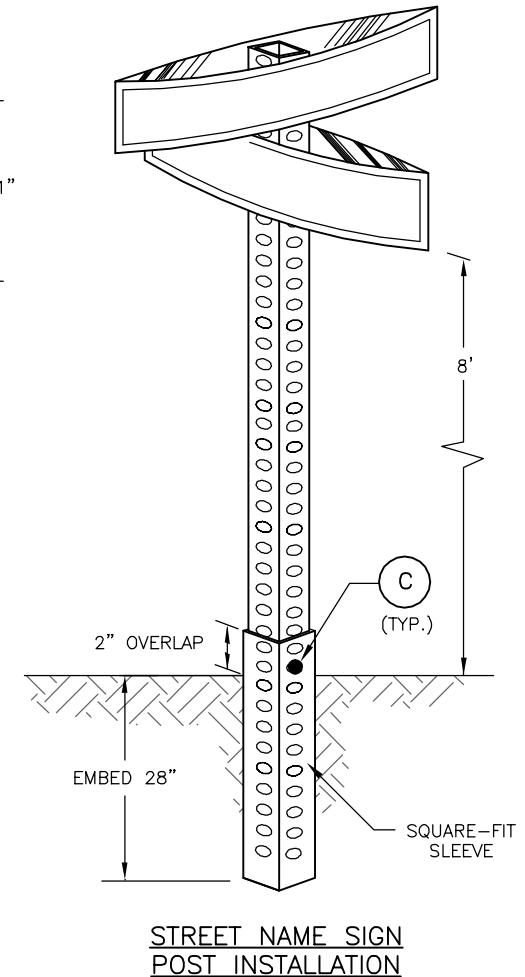
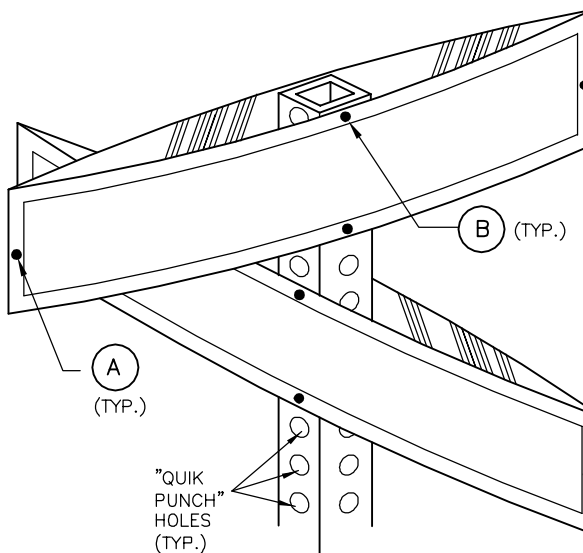


KEY TO FASTENERS:

- (A) #10-24 x 3/4" HEX HEAD MACHINE, ZINC- DEAD END
#10-24 FLANGE NUT, ZINC- DEAD END
- (B) 5/16" #16 X 3" CARRIAGE BOLT, ZINC
5/16" #16 HEX NUT, STEEL
- (C) 5/16" #16 X 2-3/4" CORNER BOLT (BREAKAWAY), ZINC
5/16" #16 HEX NUT, STEEL

NOTES :

1. POST SHALL BE 14-GAUGE GALVANIZED STEEL, QUIK-PUNCH, 7/16" HOLES, 1" ON CENTER, ALIGNED ON ALL SIDES, AND 2" SQUARE, 10 FEET IN LENGTH.
2. THE SLEEVE SHALL BE 12-GAUGE GALVANIZED STEEL, 7/16" HOLES, 1" ON CENTER, ALIGNED ON ALL SIDES, AND 2.25" SQUARE, 30" IN LENGTH.
3. ALL STREET NAME SIGNS ARE SUBJECT TO THE APPROVAL OF THE TOWN PLANNER OR HIS DESIGNEE.



TOWN OF PINEVILLE
LAND DEVELOPMENT
STANDARDS

STREET NAME SIGN
(NCDOT MAINTAINED STREETS)

2/29/20

STD. NO.	REV.
50.05A	4

NOTES

1. STREET NAME MARKERS (SNM) SHALL BE ALUMINUM, FLAT, AND HAVE DIMENSIONS AS SHOWN ON THIS DETAIL. MINIMUM LENGTH OF 24"; MAXIMUM LENGTH OF 60". THE SNM'S SHALL BE COVERED WITH WHITE HIGH INTENSITY PRISMATIC (HIP) RETRO-REFLECTIVE SHEETING (3M SERIES 3930 OR EQUIVALENT) WITH PRESSURE SENSITIVE ADHESIVE (OR EQUIVALENT TYPE IV OR HIGHER).
2. THE LETTERS SHALL BE REVERSE CUT FROM TRANSPARENT GREEN OVERLAY FILM (3M #1177 EC FILM OR EQUIVALENT MEETING FEDERAL SPECIFICATION FP-96, SECTION 178.01(A) AND ASTM D4956). THE TRANSPARENT GREEN OVERLAY FILM MUST BE PLACED ON THE SNM TO PROVIDE AN EXPOSED 0.5" BORDER OF THE UNDERLAY WHITE HIP RETRO-REFLECTIVE SHEETING.
3. THE STREET NAME SHALL BE COMPOSED OF INITIAL UPPER CASE LETTERS 6" IN HEIGHT AND CORRESPONDING LOWER CASE LETTERS 4.5" IN HEIGHT, IN FHWA "HIGHWAY B" FONT. THE STREET NAME SHALL BE LEFT-JUSTIFIED AND PLACED 0.5" FROM THE SIGN BORDER. ANY STREET NAME WITH 3 OR FEWER LETTERS SHALL BE CENTERED IN THE SIGN TEXT AREA.

PREFIX/SUFFIX NAMES SHALL BE COMPOSED OF INITIAL UPPER CASE LETTERS 3" IN HEIGHT AND CORRESPONDING LOWER CASE LETTERS 2.25" IN HEIGHT, IN FHWA "HIGHWAY C" FONT. BLOCK NUMBERS SHALL BE 3" IN HEIGHT, IN FHWA "HIGHWAY C" FONT.

SUFFIX NAMES AND BLOCK NUMBERS SHALL BE RIGHT-JUSTIFIED AND PLACED 0.5" FROM THE RIGHT-SIDE SIGN BORDER AND 0.25" FROM THE TOP AND BOTTOM SIGN BORDERS. PREFIX LETTERS (N, S, E, AND W) SHALL BE CENTERED AND PLACED 0.5" FROM THE LEFT-SIDE SIGN BORDER WITH 2.5" SPACING TO BEGINNING OF STREET NAME.

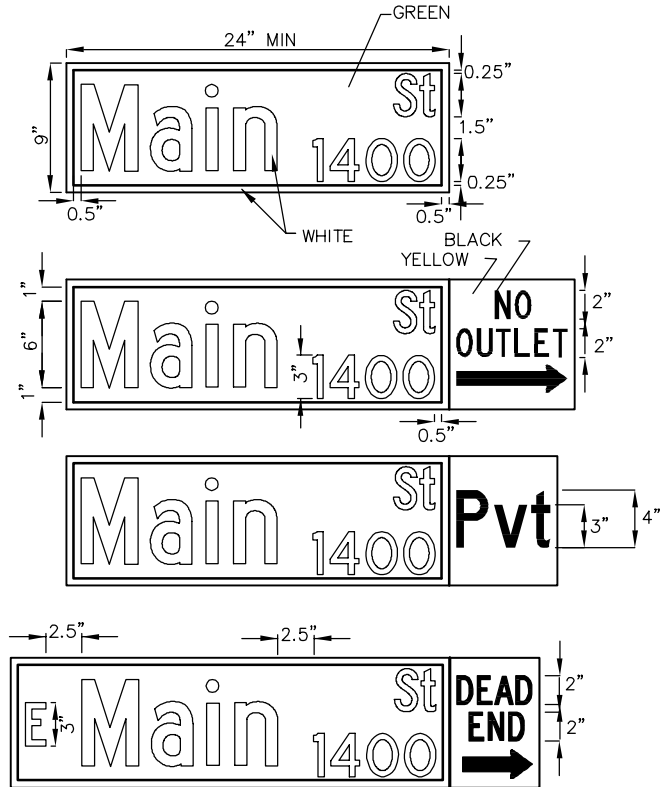
4. SUPPLEMENTAL SNM WORDING ON YELLOW HIP RETRO-REFLECTIVE SHEETING WITH BLACK VINYL LETTERS SHALL BE PLACED ADJACENT TO THE GREEN OVERLAY FILM/BORDER TO INDICATE STREETS THAT DEAD END, HAVE NO OUTLET, ETC. OR ARE PRIVATE STREETS (PVT). THE YELLOW HIP RETRO-REFLECTIVE SHEETING MUST BE PLACED ON THE SNM TO MAINTAIN AN EXPOSED 0.5" BORDER OF THE UNDERLAY WHITE HIP RETRO-REFLECTIVE SHEETING.

NO OUTLET WITH ARROW (RIGHT OR LEFT) – PLACED ON SNM AT ENTRANCE TO A STREET OR STREET NETWORK FROM WHICH THERE IS NO OTHER EXIT. USE UPPER CASE LETTERS 2" IN HEIGHT, IN FHWA "HIGHWAY C" FONT.

PVT – PLACED ON SNM AT ENTRANCE TO PRIVATE STREET, USE UPPER CASE LETTER 4" IN HEIGHT AND CORRESPONDING LOWER CASE LETTERS 3" IN HEIGHT, IN FHWA "HIGHWAY C" FONT.

DEAD END WITH ARROW (RIGHT OR LEFT) – PLACED ON SNM AT ENTRANCE TO A SINGLE STREET THAT TERMINATES IN A DEAD END OR CUL-DE-SAC. USE UPPER CASE LETTERS 2" IN HEIGHT, IN FHWA "HIGHWAY C" FONT. IF STUB STREET IS LESS THAN OR EQUAL TO 200 FEET, THEN DEAD END IS NOT NECESSARY.

5. ALL SNMs ARE SUBJECT TO THE APPROVAL OF THE TOWN PLANNER OR HIS DESIGNEE.

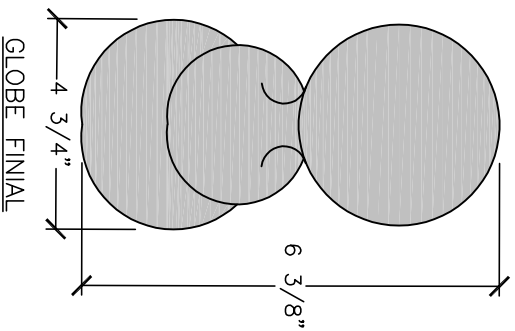
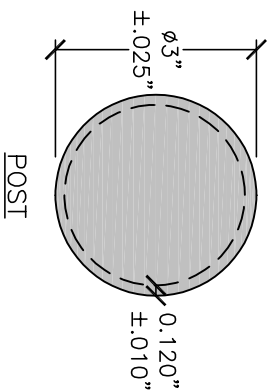


TOWN OF PINEVILLE
LAND DEVELOPMENT
STANDARDS

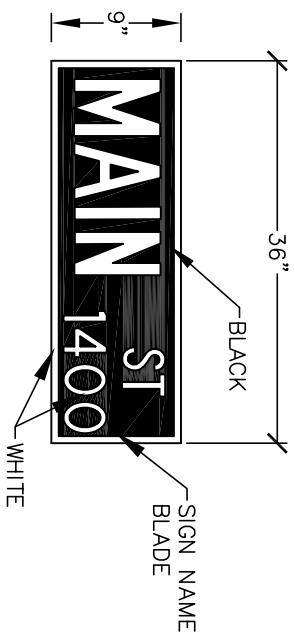
STREET NAME SIGN
(NCDOT MAINTAINED STREETS)

2/29/20

STD. NO.	REV.
50.05B	4



SEE NOTES ON PLDS 50.05D
FOR DESIGN SPECIFICATIONS.

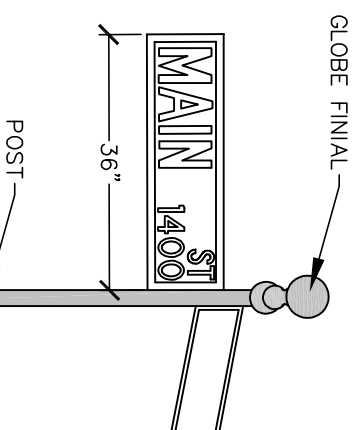


DECORATIVE STREET SIGNS AND
POSTS SHALL BE MANUFACTURED BY:
SIGNATURE STREETSAPES
2350 SOUTH GETTY STREET
MUSKEGON, MI 49444
1-800-705-1446
1-273-739-3463

PRODUCT SPECIFICATIONS:

- POST: 3" SMOOTH BLACK POST
- BASE: BS-03C CORINTHIAN BASE
- BREAKAWAY SIGN POST COUPLER: S300R 3" ROUND WITH IN-GROUND ANCHOR
- FINIAL: FN-0203 GLOBE
- BLADE HOLDER: 9" CLASSIC STREET BLADE TRIM CT-9A
- STREET SIGN SIGNS: 9" EXTRUDED REFLECTIVE BLADES.

SEE NOTES ON PLDS 50.05D



TOWN OF PINEVILLE
LAND DEVELOPMENT
STANDARDS

DECORATIVE STREET NAME SIGN AND POST

2/29/20	STD. NO.	REV.
50.05C	4	

NOTES

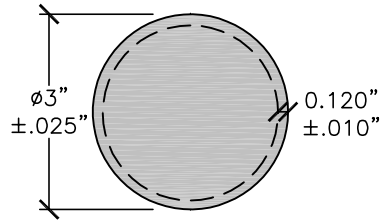
1. NEWLY CONSTRUCTED AND REPLACED SIGN POSTS IN THE TOWN OF PINEVILLE MUST BE APPROVED BY THE PUBLIC WORKS DIRECTOR PRIOR TO INSTALLATION AND PLACEMENT. THE POSTS MUST CONFORM TO THE MANUAL ON UNIFORM TRAFFIC CONTROL DEVICES (MUTCD) AND THE CRITERIA AS OUTLINED BELOW.
2. ALL ALUMINUM PRODUCTS MUST BE PRE-TREATED BEFORE APPLYING POWDER COATING TO PREVENT ADHESION PROBLEMS AND OXIDATION UNDER THE FINISH. PARTS ARE TO BE ACID WASHED, STEAM CLEANED AND SEALED PRIOR TO POWDER COATING OR PAINTING.
3. ALL HARDWARE REQUIRED FOR INSTALLATION MUST BE STAINLESS STEEL MATERIAL.
4. A STREET PLAN SHOWING THE PROPOSED LOCATION OF ALL PROPOSED SIGNS MUST BE APPROVED PRIOR TO SIGN PLACEMENT.
5. SIZE AND LOCATION OF THE SIGN POST MUST BE APPROVED PRIOR TO INSTALLATION. THE NUMBER OF STREET SIGNS, REGULATORY SIGNS, AND LOCATION MUST BE CONSIDERED WHEN DETERMINING THE DIAMETER AND BURY DEPTH OF THE POSTS. COMBINING STREET NAME SIGNS AND REGULATORY SIGNS (I.E. STOP SIGNS, SPEED LIMIT SIGNS, ETC.) MUST BE APPROVED PRIOR TO INSTALLATION. IT IS RECOMMENDED TO CONTACT PUBLIC WORKS STAFF PRIOR TO PLACING MATERIAL ORDERS AND DURING THE INSTALLATION PROCESS TO ENSURE CORRECT MATERIAL AND PRODUCT PLACEMENT.
6. POST: SIGN POSTS MUST BE 3 INCH DIAMETER SMOOTH POST MADE OF ALUMINUM MATERIAL WITH A MINIMUM WALL THICKNESS OF 0.120 INCHES. THE PAINT SHALL BE STANDARD GLOSS BLACK POWDER COAT FINISH. THE HEIGHT OF THE POST WILL CORRESPOND WITH ITS USE. THE MINIMUM BURY DEPTH SHALL BE 24 INCHES.
7. POST BASE: ALL BASES MUST BE CORINTHIAN DESIGN FROM CAST ALUMINUM USING VIRGIN MATERIAL OF. THE POST BASE MUST BE STANDARD GLOSS BLACK POWDER COAT FINISH. SET SCREWS MUST BE STAINLESS STEEL.
8. FINAL: ALL FINIALS WILL BE OF APPROVED GLOBE DESIGN FROM CAST ALUMINUM USING VIRGIN MATERIAL. THE FINAL MUST BE STANDARD GLOSS BLACK POWDER COAT FINISH. SET SCREWS MUST BE STAINLESS STEEL.
9. TRAFFIC SIGNS: ALL TRAFFIC SIGNS MUST MEET FEDERAL HIGHWAY ADMINISTRATION (FHA) REQUIREMENTS. THE SIGN SHALL BE REFLECTIVE AND BE APPROVED PRIOR TO PLACEMENT.
10. FLAT SIGN BACKERS: ALL FLAT SIGN BACKERS MUST BE PRECISION CUT TO ALLOW A 1 INCH OR 1 1/2 INCH VISIBLE BORDER AROUND THE SIGN, DEPENDING ON THE PANEL SIZE. THE PANEL MUST BE A MINIMUM THICKNESS OF 0.125 ALUMINUM AND POWDER COATED, SEMI GLOSS BLACK FINISH.
11. EXTRUDED SIGN NAME BLADES: STREET NAME SIGN SHALL BE 9 INCHES IN HEIGHT. THE PANEL MUST BE TWO-SIDED WITH A REFLECTIVE BACKGROUND AND REFLECTIVE LETTERING ON BOTH SIDES. THE STREET NAME LETTERING MUST BE LEFT-JUSTIFIED WITH THE STREET SUFFIX LOCATED TO THE UPPER RIGHT OF THE BLADE. THE LENGTH OF THE SIGN MUST BE SUFFICIENT TO ALLOW FOR PROPER SPACING OF LETTERING. CROWDED OR REDUCED SIZE LETTERING WILL NOT BE ALLOWED. PUBLIC DECORATIVE STREET SIGNS MUST HAVE A BLACK REFLECTIVE BACKGROUND WITH WHITE REFLECTIVE LETTERING. SUBMIT SIGN PROOF TO PUBLIC WORKS DIRECTOR PRIOR TO MANUFACTURE.
12. STREET SIGN BLADE HOLDERS: ALL BLADE HOLDERS ARE TO ALLOW FOR REQUIRED SIGN NAME BLADES, AS DETERMINED BY THE PUBLIC WORKS DIRECTOR, AND A LENGTH AS REQUIRED BY THE STREET NAME. THE HOLDERS SHALL BE FABRICATED USING 1 INCH SQUARE ALUMINUM TUBE WITH 0.125 INCH WALL. THE POST MOUNT BRACKET IS FABRICATED FROM 0.250 INCH ROUNDED CHANNEL WITH HOLES PUNCHED FOR THE USE OF 1/4 INCH HARDWARE. BRACKETS MOUNT TO POLES WITH 1/4 INCH STAINLESS STEEL BOLT WITH WASHERS AND LOCK NUTS MOUNTED THROUGH THE POLE AND SAND CAST ALUMINUM USING VIRGIN MATERIAL. PARTS ARE TO BE STANDARD GLOSS BLACK POWDER COAT FINISH.
13. INSTALLATION: POSTS SHALL BE ASSEMBLED AND DIRECT BURIED AS RECOMMENDED BY THE PRODUCT MANUFACTURER, AND SET IN CONCRETE AT A MINIMUM OF 24 INCHES DEPTH. TWO BOLTS SHALL BE INSTALLED AT THE BASE OF CONCRETE COLUMN TO PREVENT POST FROM ROTATING IN PLACE.



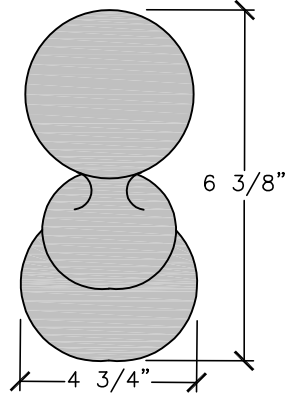
**TOWN OF PINEVILLE
LAND DEVELOPMENT
STANDARDS**

DECORATIVE STREET NAME SIGN AND POST NOTES

2/29/20	
STD. NO.	REV.
50.05D	4

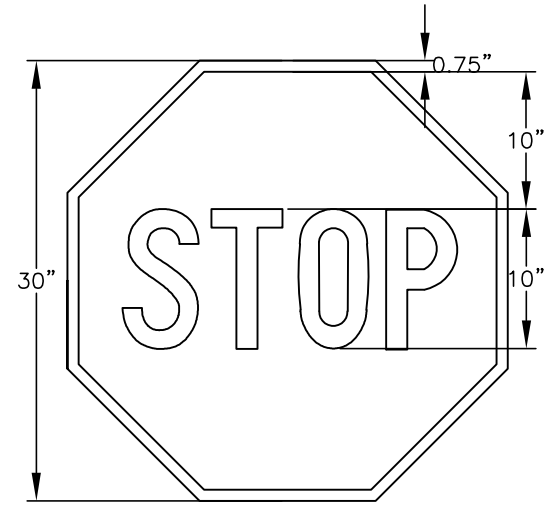


POST



GLOBE FINIAL

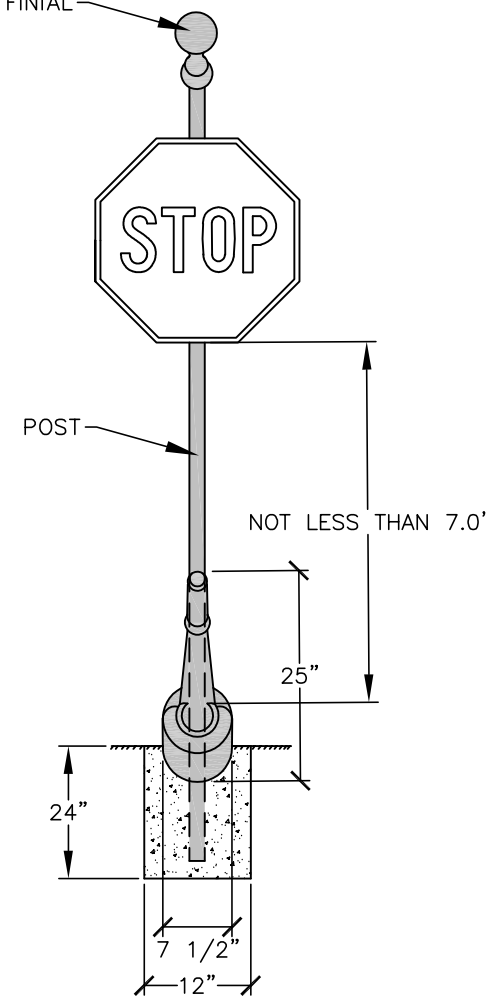
SEE NOTES ON PLDS 50.05D
FOR DESIGN SPECIFICATIONS.



PRODUCT SPECIFICATIONS:

- REGULATORY SIGN: MUTCD STANDARDS (STOP SIGN SHOWN FOR REFERENCE)
- POST: 3" SMOOTH BLACK POST
- BASE: BS-03C CORINTHIAN BASE
- BREAKAWAY SIGN POST COUPLER: S300R 3" ROUND WITH IN-GROUND ANCHOR
- FINIAL: FN-0203 GLOBE

GLOBE FINIAL



STREET NAME SIGN
POST INSTALLATION

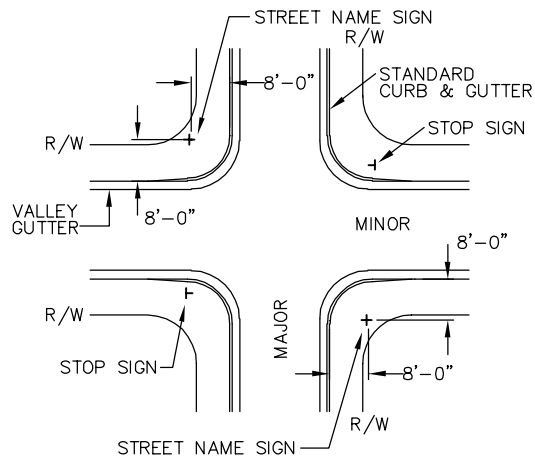


TOWN OF PINEVILLE
LAND DEVELOPMENT
STANDARDS

DECORATIVE STREET SIGN AND POST

2/29/20	
STD. NO.	REV.
50.05E	4

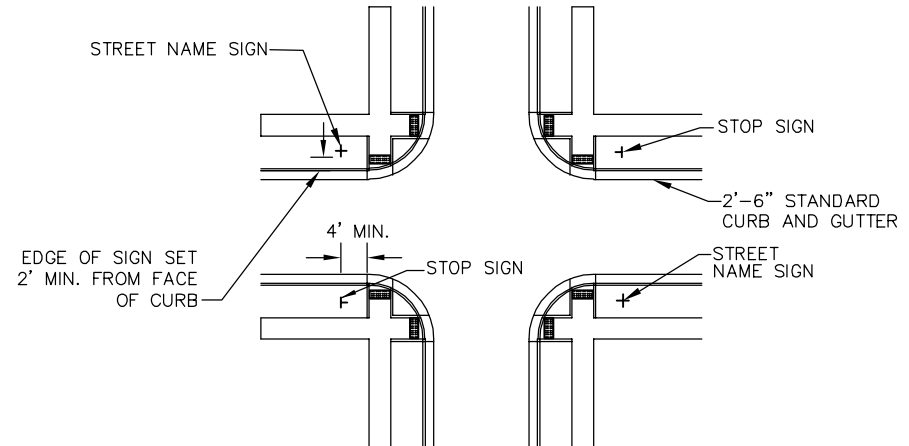
INTERSECTION with CURB and GUTTER



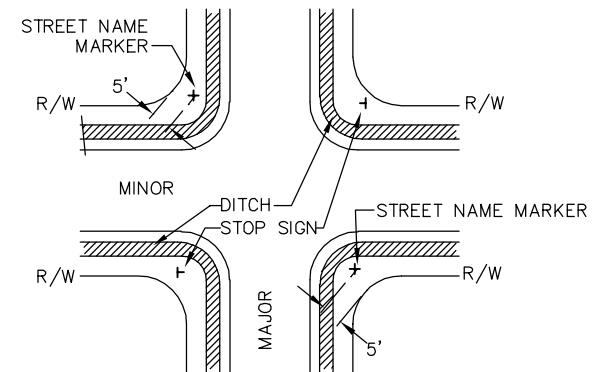
NOTES

1. TWO STREET NAME MARKERS ARE REQUIRED IF THE MAJOR STREET HAS 3 OR MORE LANES.
2. ANY VARIANCE FROM THIS STANDARD MUST BE APPROVED BY THE TOWN PLANNER

INTERSECTION with SIDEWALK, CURB, and GUTTER



INTERSECTION with DITCHES, and NO CURB and GUTTER



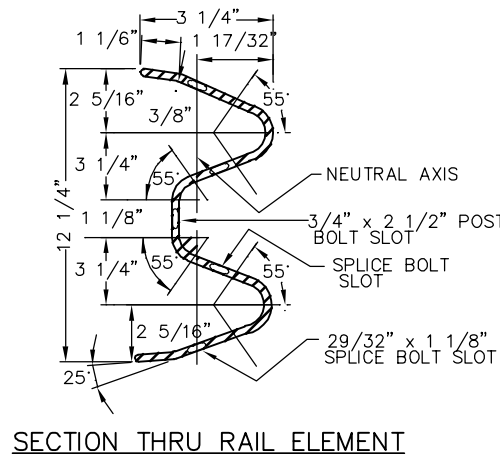
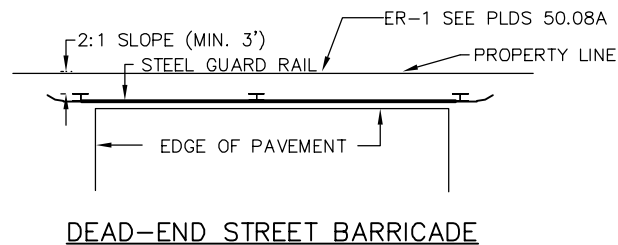
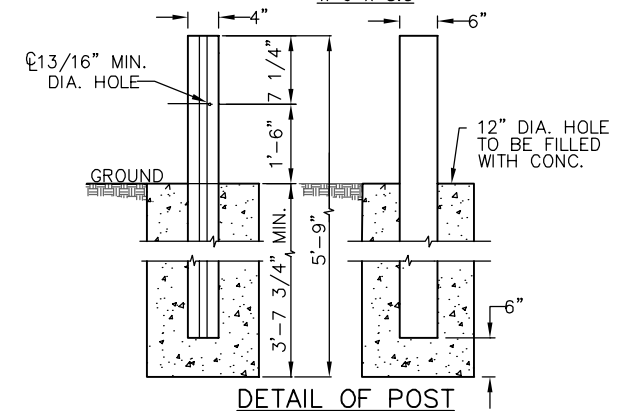
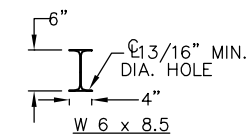
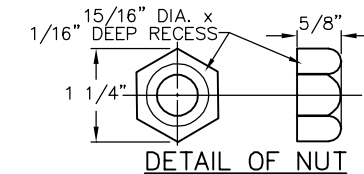
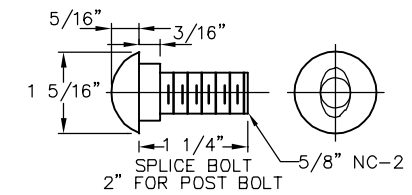
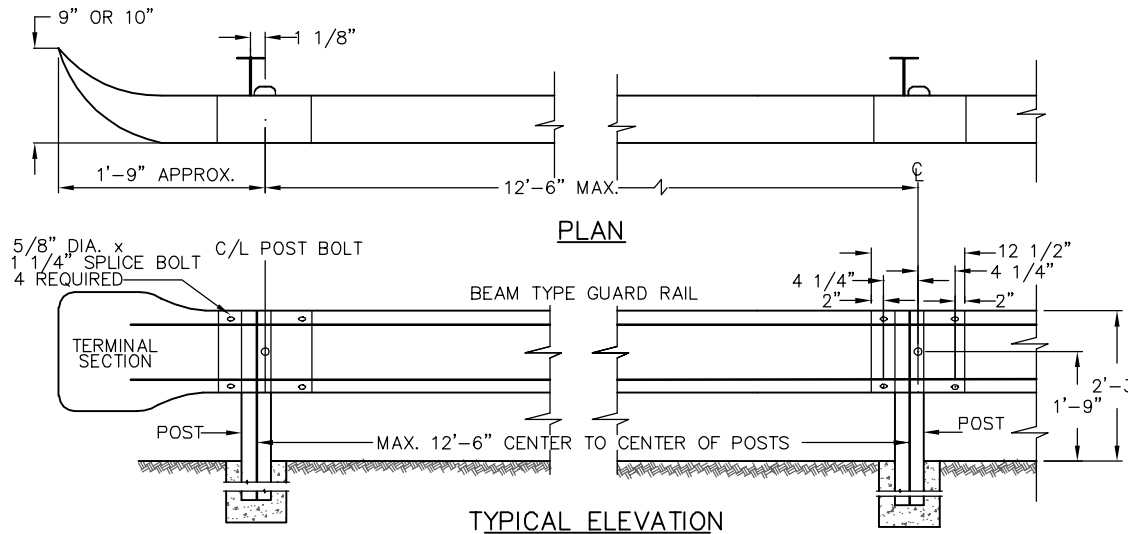
NOT TO SCALE



TOWN OF PINEVILLE
LAND DEVELOPMENT
STANDARDS

STREET NAME SIGN INSTALLATION LOCATIONS

STD. NO.	REV.
50.06	



NOTE
THIS DETAIL IS NOT A GUARDRAIL DETAIL. FOR
ROADSIDE GUARDRAIL, SEE NCDOT STANDARD
DRAWINGS 862.01-862.03

NOT TO SCALE



TOWN OF PINEVILLE
LAND DEVELOPMENT
STANDARDS

DEAD END STREET BARRICADE

STD. NO.	REV.
50.07A	3

GENERAL NOTES:

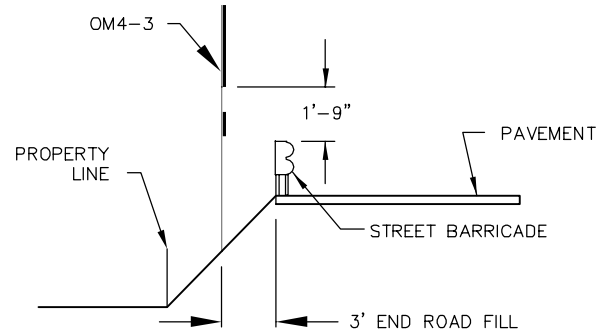
1. STEEL BEAM TYPE GUARD RAILS SHALL BE INSTALLED AT THE END OF ALL DEAD-END STREETS, EXCEPT CUL-DE-SAC STREETS WHICH HAVE BEEN IMPROVED WITH A PERMANENT TURN-AROUND.
2. FOR STREETS 26' IN WIDTH THE GUARD RAIL SHALL CONSIST OF TWO(2) 12'-6" SECTIONS OR ONE(1) 25' SECTION, THREE (3) STEEL POSTS, AND TWO (2) TERMINAL SECTIONS. FOR STREETS GREATER THAN 25' IN WIDTH THE GUARD RAIL SHALL SPAN THE ENTIRE WIDTH OF THE STREET.
3. GUARD RAIL SHALL CONSIST OF RAIL ELEMENTS FABRICATED TO DEVELOP CONTINUOUS BEAM STRENGTH AND INSTALLED AS SHOWN.
4. MINIMUM THICKNESS OF GUARD RAIL SHALL BE 12 GAGE U.S. STANDARD.
THE RAIL ELEMENT INCLUDING SPLICES, SHALL HAVE A MINIMUM ULTIMATE TENSILE STRENGTH OF 80,000 LBS.
GUARD RAIL PARTS FURNISHED SHALL BE INTERCHANGEABLE WITH SIMILAR PARTS REGARDLESS OF THE SOURCE OF MANUFACTURER.
THE HOLES FOR CONNECTING BOLTS SHALL BE PUNCHED OR DRILLED, BURNING WILL NOT BE PERMITTED.
5. THE GUARD, BOLTS, NUTS, STEEL POSTS. AND ALL OTHER METAL PARTS SHALL BE GALVANIZED TO CONFORM TO THE REQUIREMENTS FOR THE COATING CLASS, (2.50 OUNCES PER SQUARE FOOT) OF THE CURRENT SPECIFICATIONS FOR ZINC-COATED (GALVANIZED) IRON, AND STEEL SHEETS, COILS, AND CUT LENGTHS, IN ACCORDANCE WITH ASTM 123A.
6. IF THE AVERAGE SPELTER COATING AS DETERMINED FROM THE REQUIRED SAMPLES IS LESS THAN TWO (2) OUNCES OF SPELTER PER SQUARE FOOT, OR IF ANY ONE SPECIMEN HAS LESS THAN 1.8 OUNCES OF SPELTER PER SQUARE FOOT OF DOUBLE EXPOSED SURFACE, THE LOT SAMPLED SHALL BE REJECTED, THE FINISHED SHEETS SHALL BE OF FIRST CLASS COMMERCIAL QUALITY, FREE FROM INJURIOUS DEFECTS, SUCH AS BLISTERS, FLUX, AND UNCOATED SPOTS.
7. THE GUARD RAIL SHALL BE INSPECTED TO DETERMINE THAT THE MATERIAL, DIMENSIONS, AND WORKMANSHIP ARE IN ACCORDANCE WITH THIS PLAN.
8. WHERE A DEAD-END STREET REQUIRES GUARD RAIL, END OF ROADWAY MARKER SIGNS SHALL ALSO BE REQUIRED.
(SEE PLDS 50.08A & 50.08B) (ER-1).



TOWN OF PINEVILLE
LAND DEVELOPMENT
STANDARDS

DEAD END STREET BARRICADE
GENERAL NOTES

STD. NO.	REV.
50.07B	



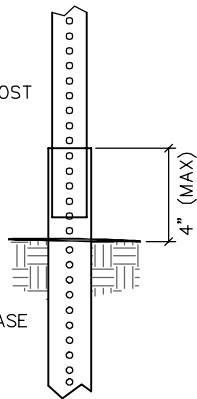
SIGN LOCATION DETAIL

CROSS
SECTION
OF POST
(2 LB./FT.)

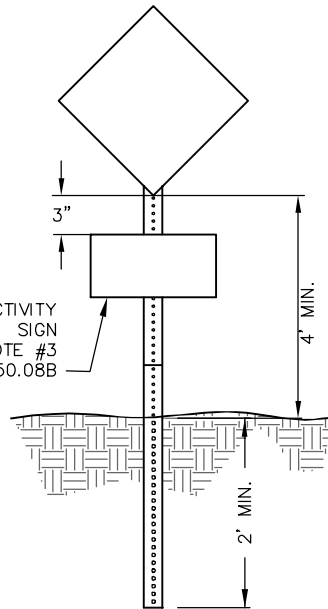


POST

BASE



CONNECTIVITY
SIGN
SEE NOTE #3
PLDS 50.08B

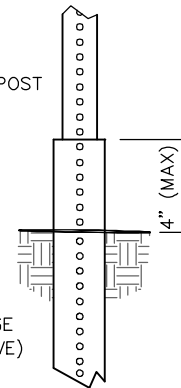


CROSS
SECTION
OF POST
(14 GAUGE)

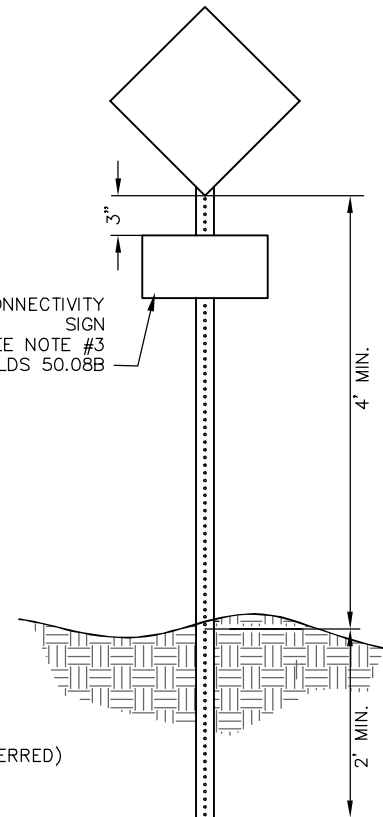


POST

BASE
(SLEEVE)



CONNECTIVITY
SIGN
SEE NOTE #3
PLDS 50.08B



NOT TO SCALE

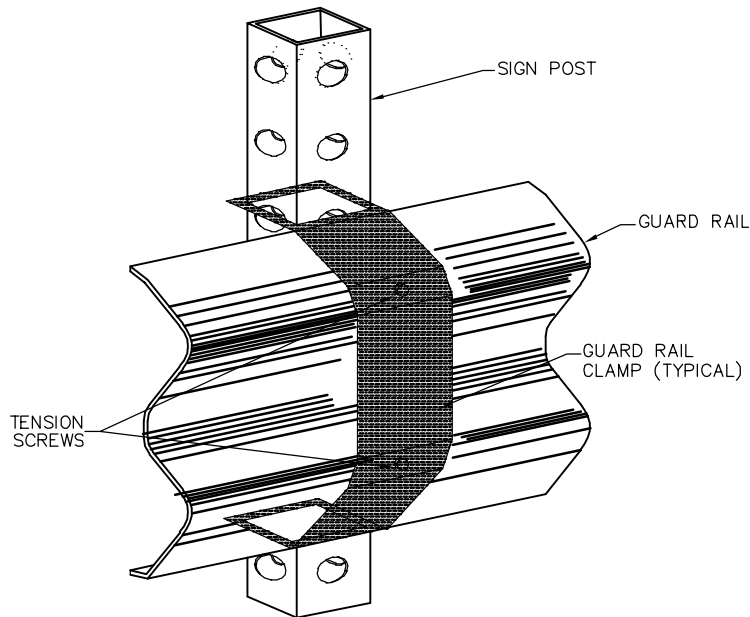


TOWN OF PINEVILLE
LAND DEVELOPMENT
STANDARDS

END OF ROADWAY MARKER

8/1/19

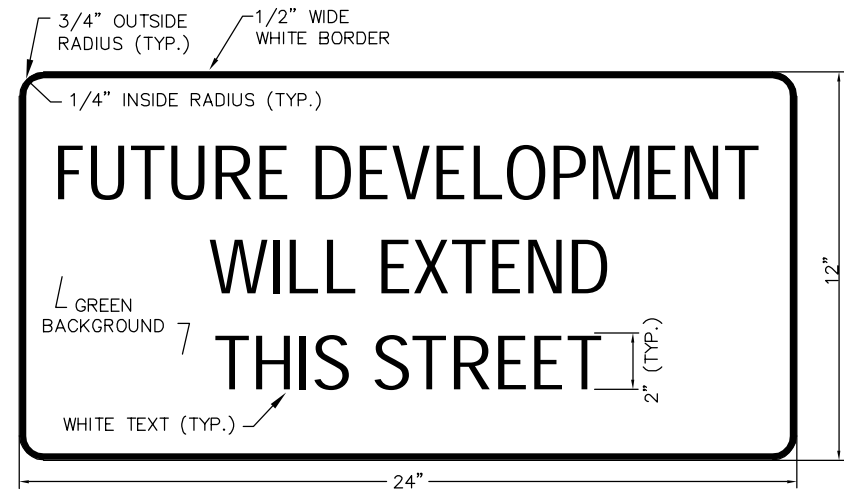
STD. NO.	REV.
50.08A	3



GUARD RAIL CLAMP INSTALLATION

NOTES:

1. WHEN A DEAD-END OR STUBBED STREET REQUIRES A GUARDRAIL SECTION, END-OF-ROADWAY MARKER SIGNS (OM4-3, 24"x24", SOLID RED) SHALL BE PROVIDED.
2. SIGNS ARE TO BE PLACED BEHIND THE BARRICADE (SEE PLDS 50.07A-B), EVENLY SPACED WITH ONE SIGN PLACED AT THE CENTERLINE LOCATION AND ADDITIONAL SIGNS AT 6' O.C. (MINIMUM OF 3 SIGNS, MAXIMUM OF 5 SIGNS).
3. WHEN BARRICADE IS USED ON A STREET STUB, THE SIGN AT THE CENTERLINE SHALL BE SUPPLEMENTED WITH A STREET CONNECTIVITY SIGN.
4. ALL SIGNS/MARKERS SHALL MEET OR EXCEED MUTCD STANDARDS FOR RETROREFLECTIVITY.



STREET CONNECTIVITY SIGN

1. SIGN SHALL MEET OR EXCEED CURRENT MUTCD STANDARDS FOR RETROREFLECTIVITY.
2. SIGN MATERIAL SHALL BE 0.080" THICK ALUMINUM.
3. ALL LETTERS SHALL BE SERIES B-2000 FROM THE CURRENT STANDARD HIGHWAY SIGNS MANUAL (AND ANY REVISION THERETO) PUBLISHED BY THE FEDERAL HIGHWAY ADMINISTRATION.

NOT TO SCALE

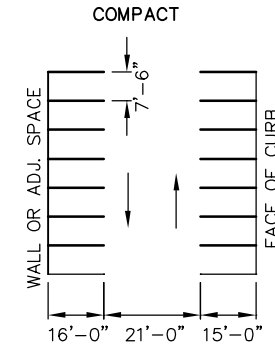
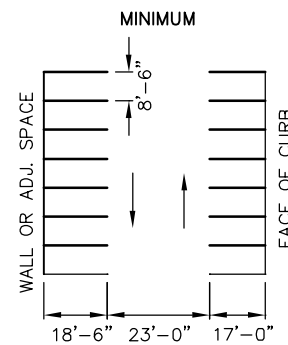
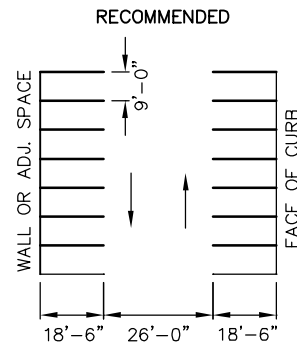


TOWN OF PINEVILLE
LAND DEVELOPMENT
STANDARDS

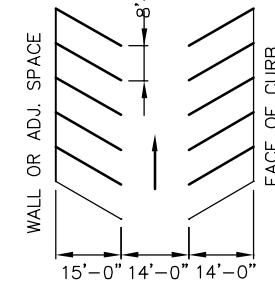
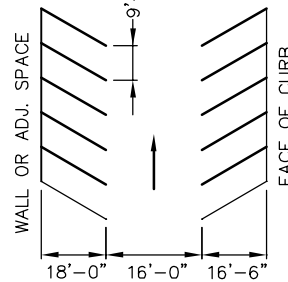
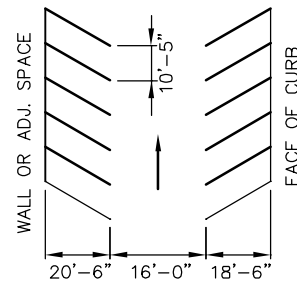
END OF ROADWAY MARKER
GUARD RAIL CLAMP INSTALLATION

STD. NO.	REV.
50.08B	

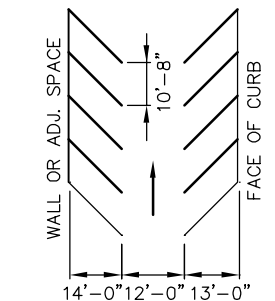
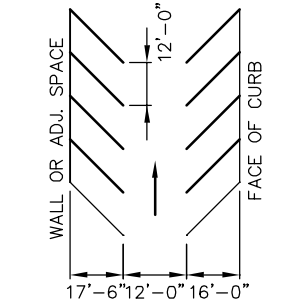
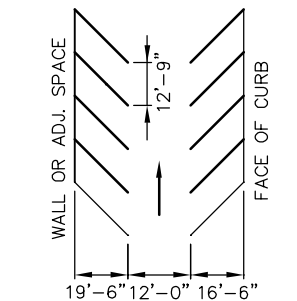
PARKING ANGLE 90°
(TWO WAY OPERATION ONLY)



PARKING ANGLE 60°
(ONE WAY OPERATION ONLY)



PARKING ANGLE 45°
(ONE WAY OPERATION ONLY)



NOTES:

1. FOR ACCESSIBLE PARKING STANDARDS/SIGNAGE SEE PLDS 50.10A AND B.
2. PAVEMENT MARKINGS SHALL BE 4" WHITE PAINT.
3. ALTERNATIVE PARKING ANGLES, AISLE WIDTHS, AND OPERATION (TWO-WAY ANGLED PARKING OR REVERSE-ANGLE PARKING) WILL BE CONSIDERED BY TOWN ENGINEER ON A CASE-BY-CASE BASIS.

NOT TO SCALE

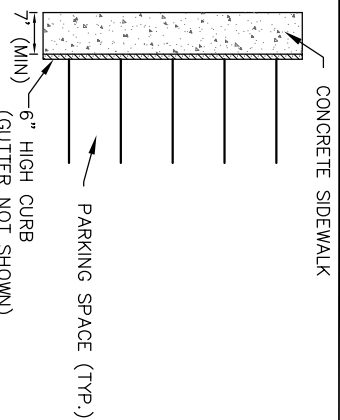


TOWN OF PINEVILLE
LAND DEVELOPMENT
STANDARDS

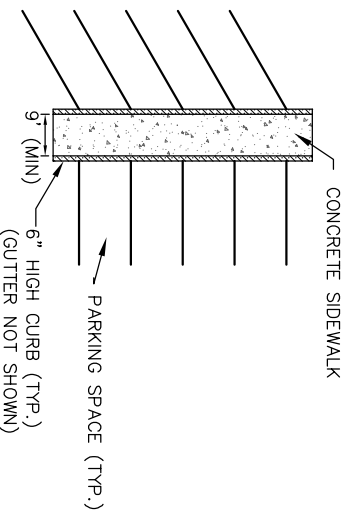
PARKING STANDARDS

8/1/19

STD. NO.	REV.
50.09A	3



PARKING ON ONE SIDE OF A SIDEWALK
SIDEWALK ADJACENT TO HEAD-IN OR BACK-IN PARKING SHALL BE AT LEAST 7 FEET WIDE.



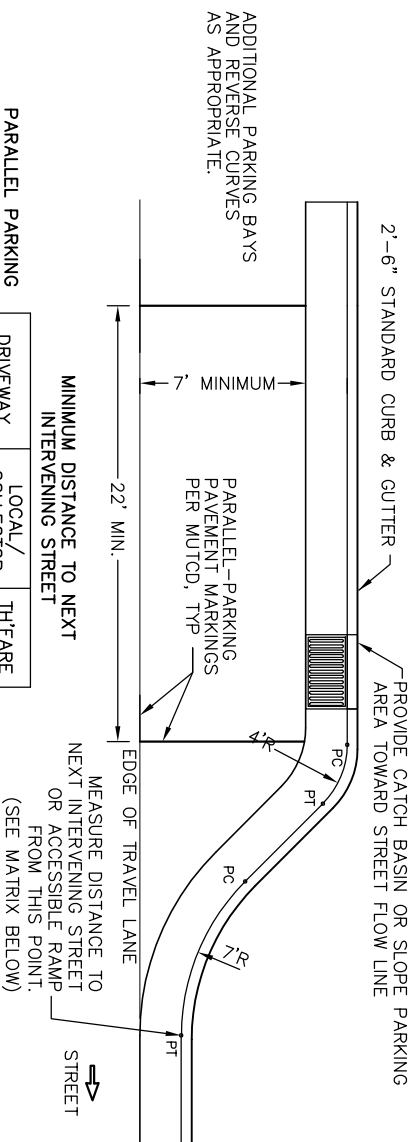
PARKING ON BOTH SIDES OF A SIDEWALK
SIDEWALK BETWEEN TWO ROWS OF HEAD-IN OR BACK-IN PARKING SHALL BE AT LEAST 9 FEET WIDE.

NOTES:

1. A 2-FOOT-WIDE PLANTING STRIP LOCATED AT THE BACK OF CURB CAN BE USED IN LIEU OF 2 FEET OF SIDEWALK WIDTH.
2. PARKING AT ANY ANGLE OTHER THAN PARALLEL SHALL BE SUBJECT TO THIS STANDARD.
3. IF MONOLITHIC CURB & SIDEWALK IS USED, ADD 6" TO ALL DIMENSIONS (1' IF PARKING ON BOTH SIDES).
4. WHEELSTOPS SHALL ONLY BE USED IN LIEU OF 2 FEET OF SIDEWALK WITH THE APPROVAL OF THE TOWN AND WHEN EXISTING CONDITIONS PREVENT CONSTRUCTION OF A 7-FOOT/9-FOOT SIDEWALK. WHEELSTOPS SHALL BE 6" HIGH, MADE OUT OF 3600-PSI REINFORCED CONCRETE, AND ANCHORED WITH #5 OR GREATER REBAR (2' MINIMUM LENGTH). REBAR HOLES SHALL BE GROUTED UPON INSTALLATION. WHEELSTOPS SHALL BE PLACED AT 2 FEET FROM THE EDGE OF SIDEWALK OR OBSTRUCTION.

NOTES:

1. REVERSE CURVES NOT NECESSARY IF ADEQUATE DRAINAGE CAN BE PROVIDED THAT WILL ENSURE THAT SEDIMENT, WATER, DEBRIS, ETC., DOES NOT COLLECT IN 90-DEGREE CORNERS.
2. PARALLEL ACCESSIBLE SPACES AND LOADING ZONES TO BE REVIEWED ON A CASE-BY-CASE BASIS.
3. FOR PARKING BAYS THAT ARE 8 FEET IN WIDTH OR GREATER, THE PAVEMENT MARKINGS SHALL BE SET AT ONE (1) FOOT LESS THAN THE STALL WIDTH.
4. GREATER SEPARATION FROM INTERVENING STREETS THAN THE DISTANCES PROVIDED BELOW MAY BE REQUIRED AT THE TOWN ENGINEER'S DISCRETION.
5. POSITIVE DRAINAGE SHALL BE PROVIDED EITHER BY INSTALLATION OF APPROPRIATE DRAINAGE STRUCTURES OR SLOPE PARKING AREA TO STREET FLOW LINE. SLOPING PARKING AREA TO STREET FLOW LINE ONLY PERMITTED IF ROAD GRADE IS GREATER THAN 2%.
6. IF A BIKE LANE IS REQUIRED ADJACENT TO PARALLEL PARKING, THE MINIMUM WIDTH OF BIKE LANE IS 6'.



PARALLEL PARKING BAY LOCATED ON	DRIVEWAY	LOCAL/ COLLECTOR	TH'FARE
LOCAL/COLLECTOR	20'	20'	20'
THOROUGHFARE	20'	20'	50'

PARALLEL PARKING STANDARDS

NOT TO SCALE



**TOWN OF PINEVILLE
LAND DEVELOPMENT
STANDARDS**

PARKING STANDARDS, CONT.

2/29/20	STD. NO.	REV.
50.09B	4	

ACCESSIBLE PARKING REQUIREMENTS

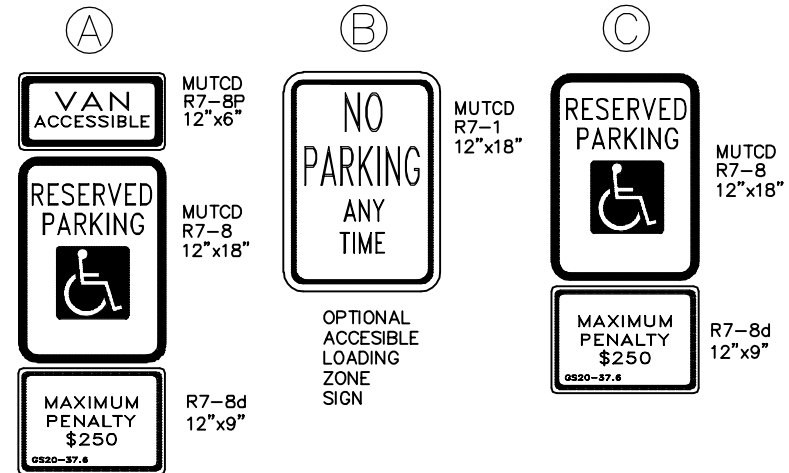
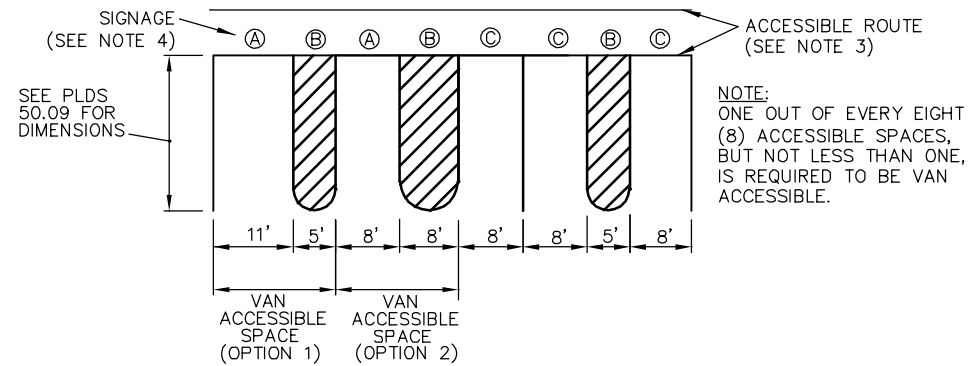
TOTAL PARKING SPACES PROVIDED	MINIMUM NUMBER OF ACCESSIBLE SPACES REQUIRED	MINIMUM NUMBER OF ACCESSIBLE SPACES REQUIRED TO BE VAN ACCESSIBLE
1 TO 25	1	1
26 TO 50	2	1
51 TO 75	3	1
76 TO 100	4	1
101 TO 150	5	1
151 TO 200	6	1
201 TO 300	7	1
301 TO 400	8	1
401 TO 500	9	2
501 TO 1000	2% OF TOTAL	1 IN EVERY 8 ACCESSIBLE SPACES
1001 AND OVER	20 PLUS 1 FOR EACH 100 OVER 1000	1 IN EVERY 8 ACCESSIBLE SPACES

REF.: SECTION 208 OF THE ADA STANDARDS FOR ACCESSIBLE DESIGN

NOTES:

- ALL 12"x18" ACCESSIBLE SIGNS (R7-8 & R7-1) SHALL BE MOUNTED AT 7 FEET FROM GRADE TO BOTTOM EDGE OF SIGN FACE (MUTCD). MOUNTING HEIGHT CAN BE REDUCED TO 5 FEET IF PLACED IN AN AREA BETWEEN SIDEWALK AND BUILDING FACE IN WHICH PEDESTRIANS ARE NOT EXPECTED TO USE.
- REFER TO MANUAL ON UNIFORM TRAFFIC CONTROL DEVICES, (MUTCD) U.S. DEPARTMENT OF TRANSPORTATION AND NORTH CAROLINA DEPARTMENT OF TRANSPORTATION SUPPLEMENT.
- IF ACCESSIBLE ROUTE IS A RAISED SIDEWALK AREA, THEN RAMPS ARE REQUIRED AT LOADING ZONE AREA.
- SIGNAGE MUST NOT OBSTRUCT ACCESSIBLE ROUTE OR RAMPS.

PARKING SPACE PAVEMENT MARKINGS



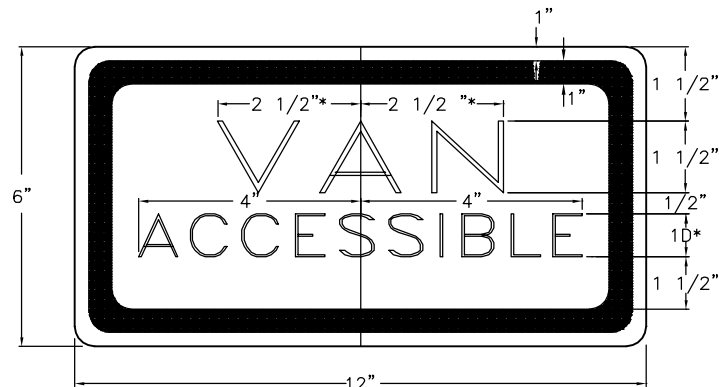
NOT TO SCALE



TOWN OF PINEVILLE
LAND DEVELOPMENT
STANDARDS

ACCESSIBLE PARKING AND
SIGNAGE STANDARDS

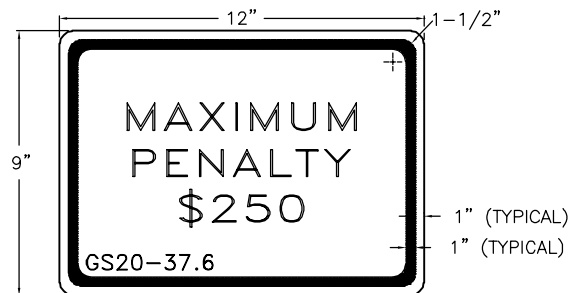
STD. NO.	REV.
50.10A	3



LEGEND AND BORDER - GREEN
BACKGROUND - WHITE

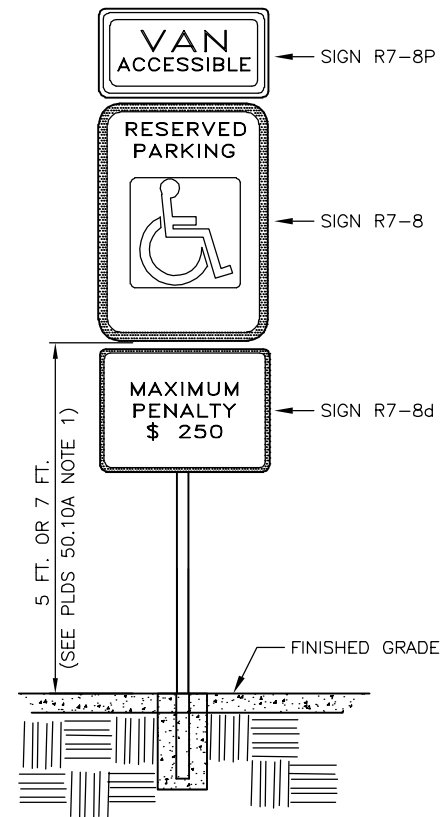
* INCREASE SPACING 50%
D-FHWA (FEDERAL HIGHWAY ADMINISTRATION/USDOT) SERIES D LETTERS

SUPPLEMENTAL VAN ACCESSIBLE
SIGN (R7-8P)



LEGEND AND BORDER - GREEN
BACKGROUND - WHITE

SIGN APPROVED FOR USE UNDER GENERAL STATUTE 20-37.6
THIS PENALTY SIGN IS REQUIRED TO ACCOMPANY ALL R7-8
PARKING SIGNS ERECTED AFTER DECEMBER 31, 1990



NOTE:

1. SUPPLEMENTAL VAN ACCESSIBLE SIGN (R7-8P) USED IF THERE IS ONLY ONE REQUIRED ACCESSIBLE PARKING SPACE (MUST BE VAN ACCESSIBLE) AND AT EACH ADDITIONAL REQUIRED VAN ACCESSIBLE SPACE. (SEE PLDS NO. 50.10A)

NOT TO SCALE



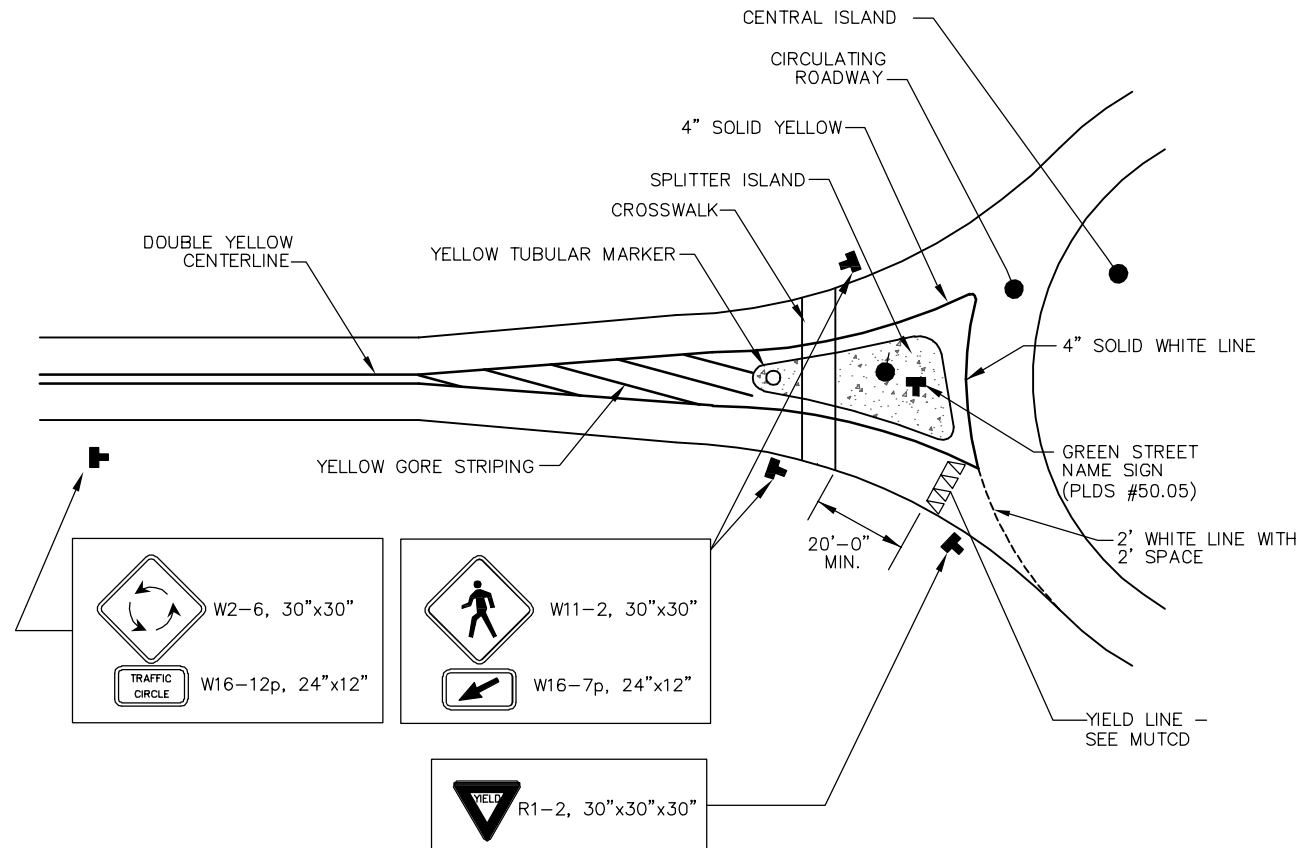
TOWN OF PINEVILLE
LAND DEVELOPMENT
STANDARDS

SUPPLEMENTAL VAN ACCESSIBLE
SIGN (R7-8P)

8/1/19	
STD. NO.	REV.
50.10B	3

NOTES:

1. PAVEMENT MARKINGS TO BE PER LATEST EDITION OF THE MANUAL ON UNIFORM TRAFFIC CONTROL DEVICES (MUTCD).
2. SIGNS TO BE LOCATED/SPACED PER MUTCD REQUIREMENTS.
3. "CIRCULAR INTERSECTION" AND "TRAFFIC CIRCLE" SUBPLATE SIGNS, AND YELLOW TUBULAR MARKERS, ARE REQUIRED ON THOROUGHFARES. COUNTY, NCDOT AND/OR TOWN WILL DETERMINE IF ONE OR MORE OF THESE ARE NECESSARY ON LOCAL OR COLLECTOR STREETS.
4. "PEDESTRIAN CROSSING" AND ARROW SUBPLATE SIGNS ARE REQUIRED WHEREVER THERE IS A MARKED CROSSWALK OR ON A THOROUGHFARE.
5. "YIELD" SIGNS ARE ALWAYS REQUIRED.
6. PAVEMENT MARKINGS, SPLITTER ISLAND DESIGNS, CROSSWALK, ETC., ARE SHOWN FOR CONTEXT ONLY. REFER TO THE MUTCD AND/OR THE FEDERAL HIGHWAY ADMINISTRATION'S MANUAL ROUNDABOUTS: AN INFORMATIONAL GUIDE FOR MORE DETAIL OR DESIGN INFORMATION.
7. ADDITIONAL SIGNS MAY BE NEEDED ON A CASE-BY-CASE BASIS, TO BE EVALUATED BY TOWN ENGINEER.
8. ALL PAVEMENT MARKING SHALL BE THERMOPLASTIC.



NOT TO SCALE

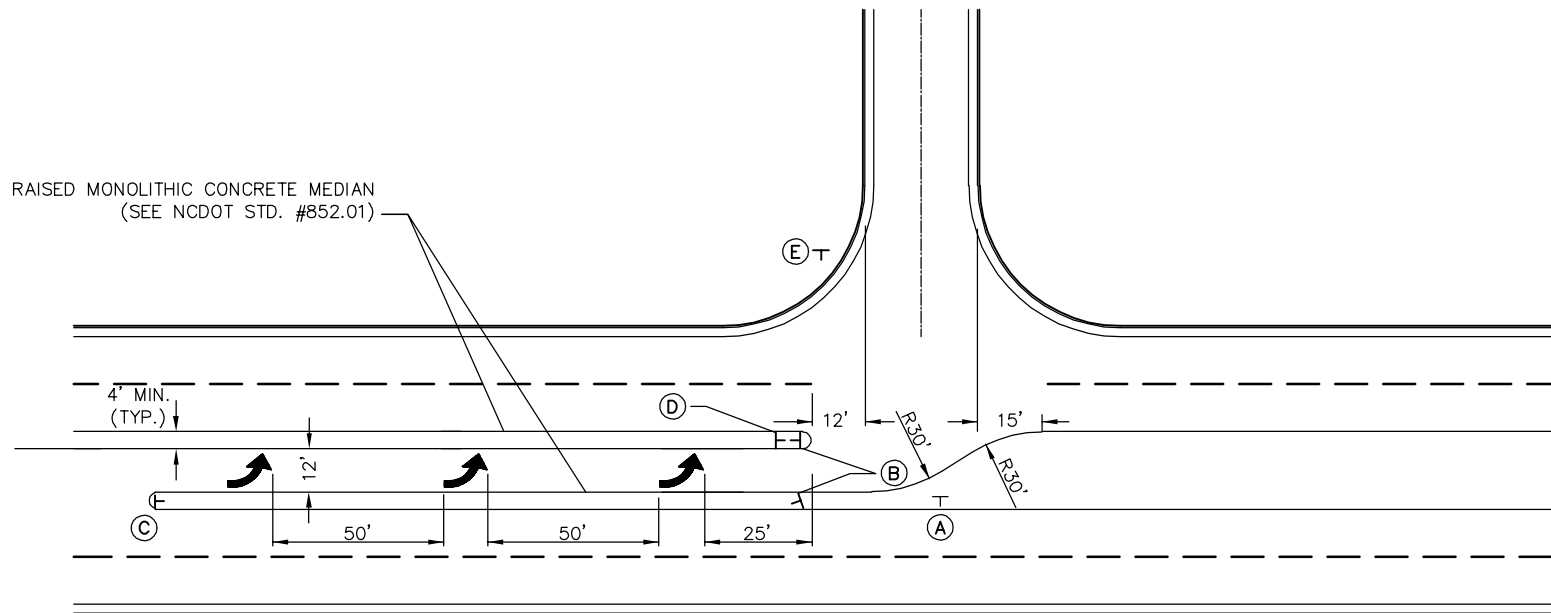


TOWN OF PINEVILLE
LAND DEVELOPMENT
STANDARDS

SIGNAGE AND PAVEMENT MARKINGS AT ROUNDABOUTS

8/1/19

STD. NO.	REV.
50.11	3



NOTES:

1. ADDITIONAL PAVEMENT MARKINGS (EDGE LINES, GORES, ETC.) ARE NOT SHOWN BUT ARE REQUIRED BY THE TOWN ENGINEER.
2. FOR DIVIDED SIDE STREETS, MEASURE THE 12 FOOT DIMENSION FROM THE FACE OF MEDIAN INSTEAD OF FACE OF CURB ON APPROACHING LANE.
3. ALL SIGNS SHALL BE MUTCD STANDARD SIGNS.

SIGN LEGEND

- (A) ONE WAY (R6-2R, 18"x24")
- (B) DO NOT ENTER (R5-1, 30"x30")
- (C) DOUBLE-DOWN ARROW (W12-1, 30"x30")
- (D) NO U-TURN (R3-4, 24"x24")*
- (E) STOP (R1-1, 30"x30")

* IF NECESSARY

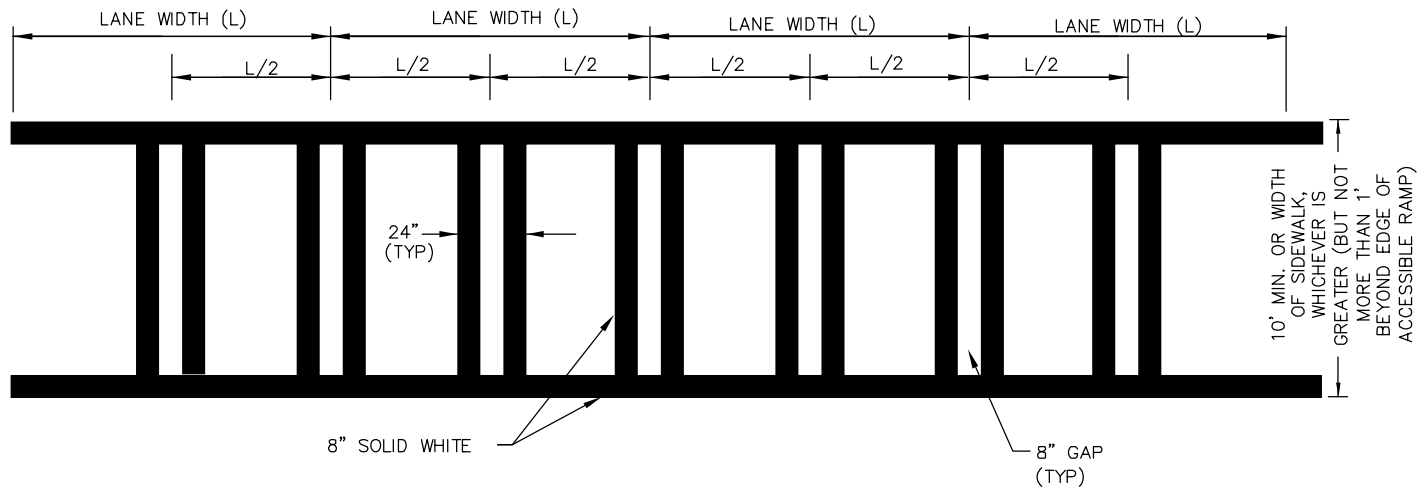
NOT TO SCALE



TOWN OF PINEVILLE
LAND DEVELOPMENT
STANDARDS

DIRECTIONAL CROSSOVER
WITH RAISED MEDIANS

STD. NO.	REV.
50.13	



NOTES

1. PER MUTCD STANDARDS, WHEN CROSSWALK LINES ARE USED THEY SHALL CONSIST OF SOLID WHITE LINES THAT MARK THE CROSSWALK. THEY SHALL BE NOT LESS THAN 150 MM (6 IN) NOR GREATER THAN 600 MM (24 IN) IN WIDTH.
2. IF TRANSVERSE LINES ARE USED TO MARK A CROSSWALK, THE GAP BETWEEN THE LINES SHOULD NOT BE LESS THAN 1.8 M (6 FT). IF DIAGONAL OR LONGITUDINAL LINES ARE USED WITHOUT TRANSVERSE LINES TO MARK A CROSSWALK, THE CROSSWALK SHOULD NOT BE LESS THAN 1.8 M (6 FT) WIDE.
3. IF USED, THE DIAGONAL OR LONGITUDINAL LINES SHOULD BE 300 TO 600 MM (12 TO 24 IN) WIDE AND SPACED 300 TO 1500 MM (12 TO 60 IN) APART. THE MARKING DESIGN SHOULD AVOID THE WHEEL PATHS, AND THE SPACING SHOULD NOT EXCEED 2.5 TIMES THE LINE WIDTH.

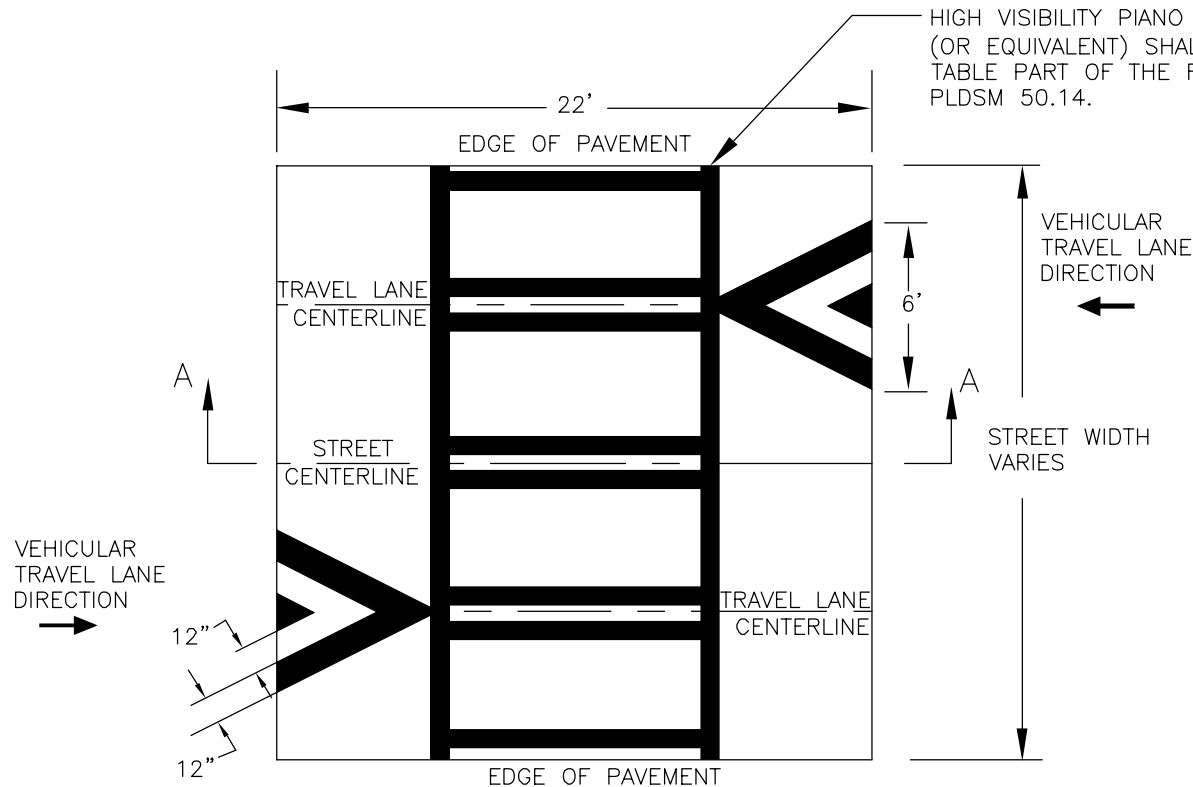
NOT TO SCALE



TOWN OF PINEVILLE
LAND DEVELOPMENT
STANDARDS

PIANO-STYLE CROSSWALK

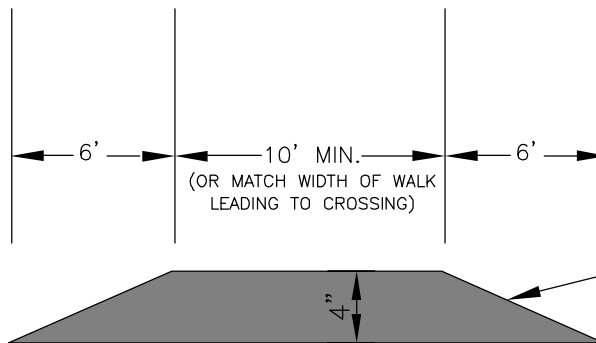
STD. NO.	REV.
50.14	



HIGH VISIBILITY PIANO STYLE CROSSWALK MARKINGS (OR EQUIVALENT) SHALL BE INSTALLED ON THE TABLE PART OF THE RAISED CROSSWALK PER PLDSM 50.14.

NOTES:

1. THIS DETAIL IS TO BE USED ONLY WITH PRIOR APPROVAL BY THE TOWN AND PINEVILLE FIRE DEPARTMENT.
2. ADJACENT CURB RAMPs SHALL BE INSTALLED PER PLDSM 10.31 A&B, MODIFIED TO A 1 1/4" DEPRESSION AT BACK OF CURB.
3. PROVIDE APPROPRIATE STORM DRAINAGE MEASURES TO ENSURE WATER DOES NOT POND AT ANY POINT ALONG THE SURFACE CROSSWALK OR AT THE BASE OF THE RAISED CROSSWALK.
4. THE CROSSWALK SURFACE RUNNING SLOPE AND CROSS SLOPE SHALL NOT EXCEED THAT OF THE EXISTING ROADWAY.
5. STORM GRATES SHALL NOT BE INSTALLED INTO THE TAPERS OR TABLE PORTION OF THE RAISED CROSSWALK.
6. THIS DETAIL IS NOT PERMITTED FOR USE ON NCDOT-MAINTAINED ROADWAYS.



PROP. APPROX. 4" OF ASPHALT CONCRETE SURFACE COURSE, TYPE S9.5C AT AN AVERAGE RATE OF 168 LBS. PER SY. YD. IN EACH OF TWO LAYERS.

SECTION A-A

NOT TO SCALE

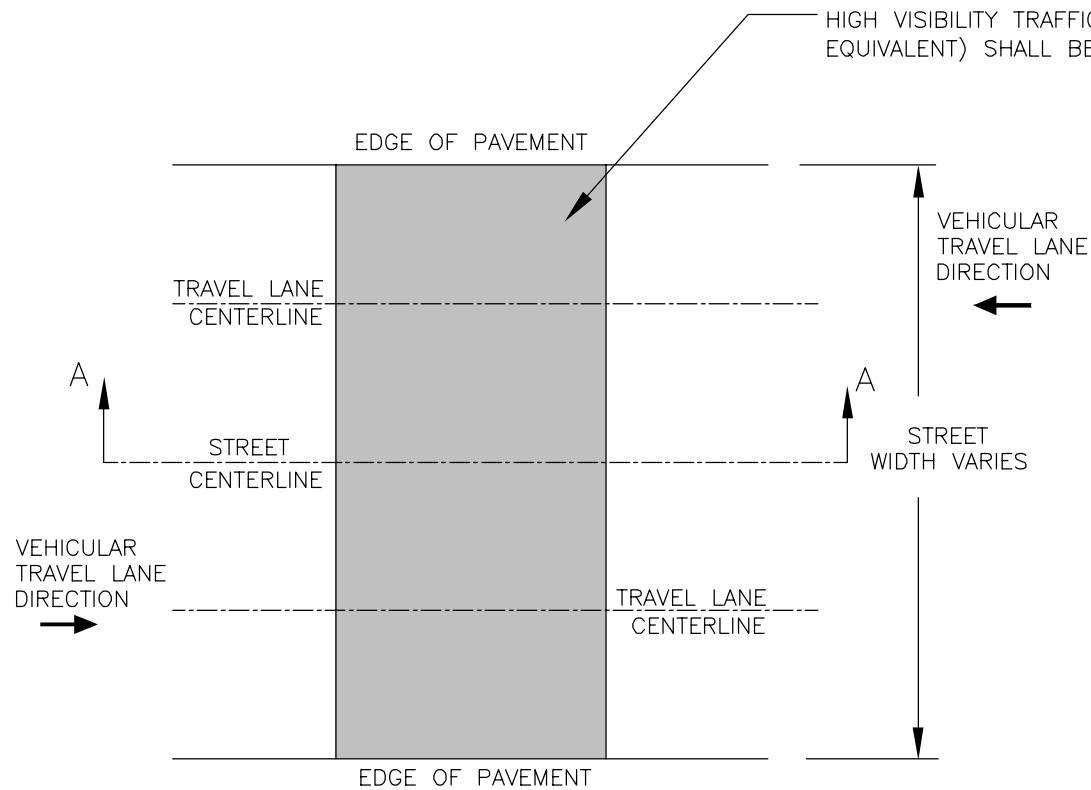


TOWN OF PINEVILLE
LAND DEVELOPMENT
STANDARDS

RAISED CROSSWALK

4/2/21

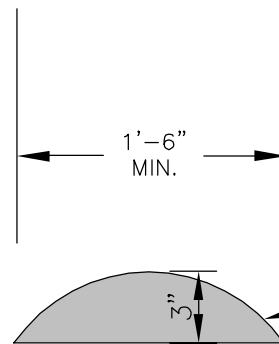
STD. NO.	REV.
50.15	5



HIGH VISIBILITY TRAFFIC YELLOW PAINT (OR EQUIVALENT) SHALL BE INSTALLED

NOTES:

1. THIS DETAIL IS TO BE USED ONLY WITH PRIOR APPROVAL BY THE TOWN AND PINEVILLE FIRE DEPARTMENT.
2. STORM GRATES SHALL NOT BE INSTALLED INTO THE TABLE PORTION OF THE SPEED BUMP.
3. THIS DETAIL IS NOT PERMITTED FOR USE ON NCDOT-MAINTAINED ROADWAYS.



SECTION A-A

PROP. APPROX. 3" OF ASPHALT CONCRETE SURFACE COURSE, TYPE S9.5C AT AN AVERAGE RATE OF 168 LBS. PER SY. YD. IN EACH OF TWO LAYERS.

NOT TO SCALE

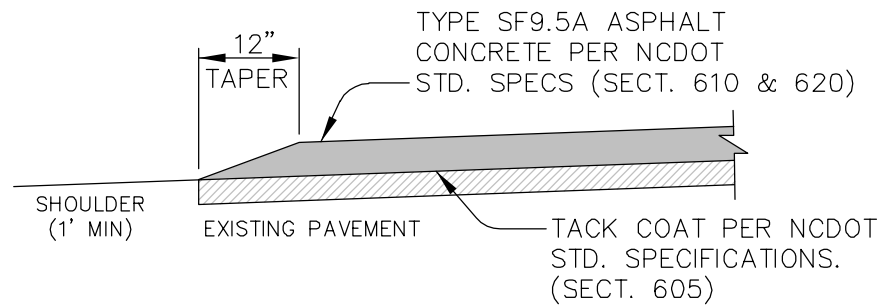
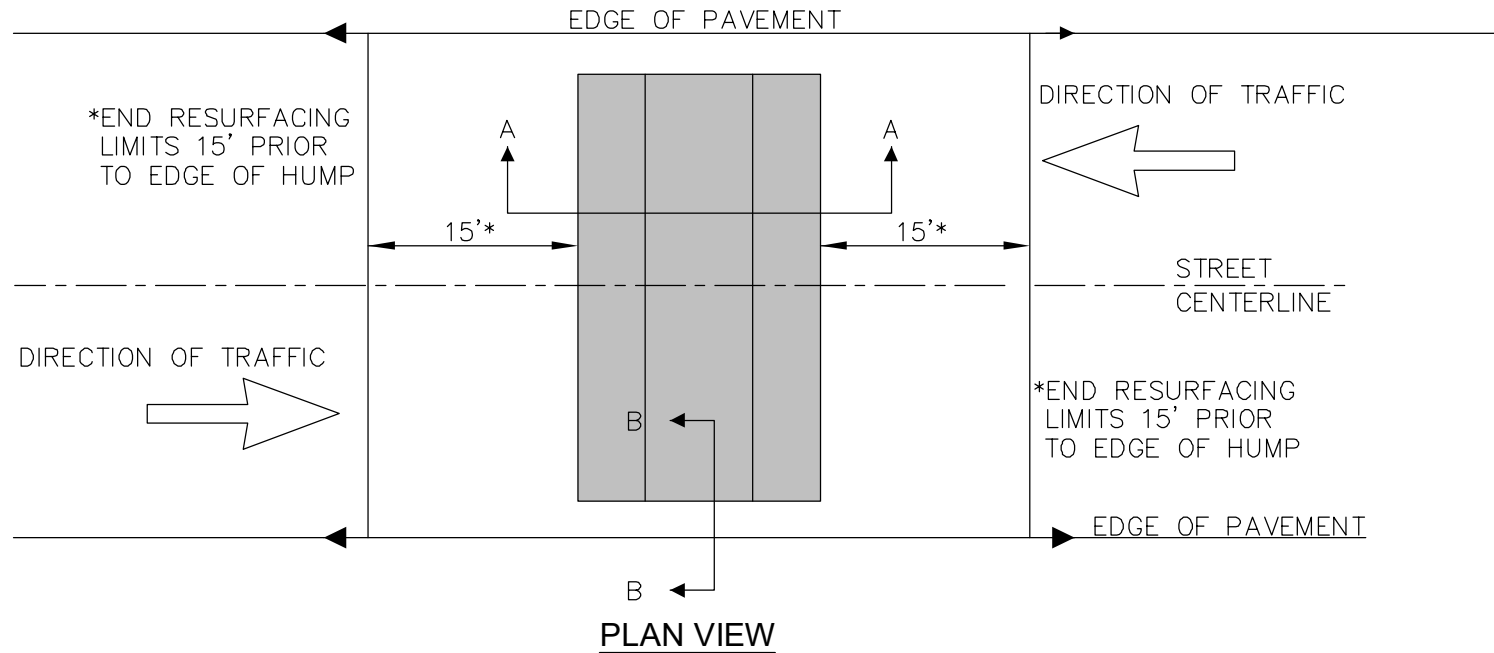


TOWN OF PINEVILLE
LAND DEVELOPMENT
STANDARDS

SPEED BUMP

4/2/21

STD. NO.	REV.
50.16	5



SHOULDER DETAIL FOR STREETS WITHOUT CURB

NOTES:
THE ASPHALT PLANT MIX SHALL BE COMPACTED TO A DENSITY OF AT LEAST 94%

NOT TO SCALE

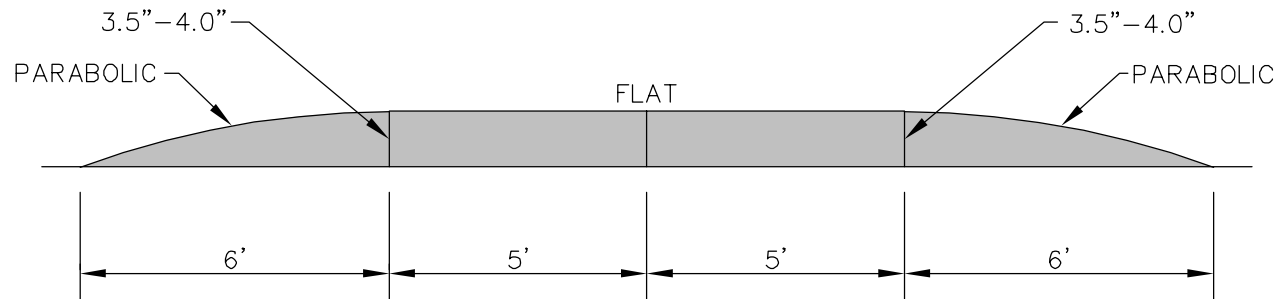


TOWN OF PINEVILLE
LAND DEVELOPMENT
STANDARDS

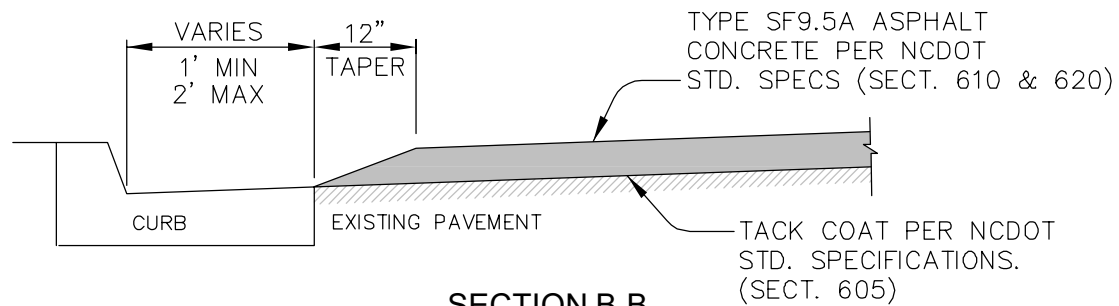
SPEED TABLE
1 of 3

4/2/21

STD. NO.	REV.
50.17	5



SECTION A-A



SECTION B-B

NOT TO SCALE



TOWN OF PINEVILLE
LAND DEVELOPMENT
STANDARDS

SPEED TABLE
2 of 3

4/2/21	
STD. NO.	REV.
50.17	5

Diagram illustrating the layout of a travel lane with dimensions in feet (').

Horizontal Dimensions:

- Total width: 22'
- Travel lane width: 22'
- Shoulder width: 1' (on each side)
- Travel lane centerline width: 11' (each side of centerline)
- Edge of pavement width: 6' (each side of travel lane)

Vertical Dimensions:

- Total width: 24' TYP.
- Travel lane width: 22'
- Shoulder width: 1' (on each side)
- Travel lane centerline width: 11' (each side of centerline)
- Edge of pavement width: 6' (each side of travel lane)

Labels:

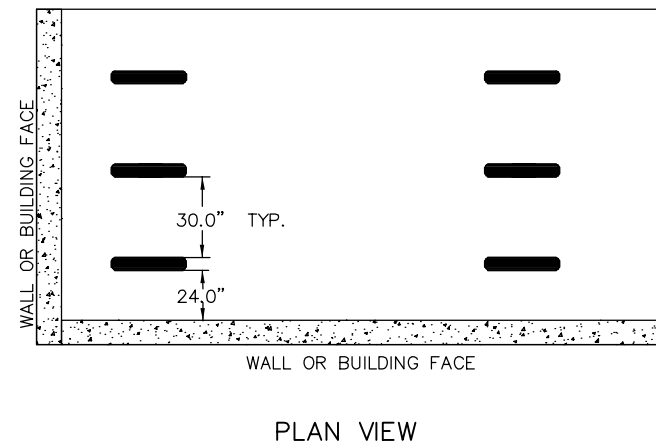
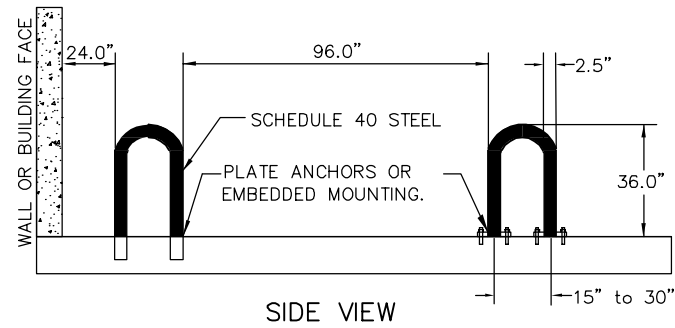
- EDGE OF PAVEMENT
- TRAVEL LANE CENTERLINE
- STREET CENTERLINE
- TRAVEL LANE CENTERLINE
- EDGE OF PAVEMENT
- DIRECTION OF TRAFFIC
- VARIES
- 24' TYP.



SPEED TABLE
3 of 3

4/2/21

STD. NO.	REV.
50.17	5



NOTES:

1. BIKE RACKS SHOULD BE INSTALLED AS PER MANUFACTURER'S RECOMMENDED INSTALLATION PROCEDURES.
2. ALTERNATIVE BIKE RACKS OR LOCKERS MAY BE USED BUT ARE SUBJECT TO APPROVAL BY THE TOWN OF PINEVILLE
3. ALL DIMENSIONS SHOWN ARE MINIMUM.

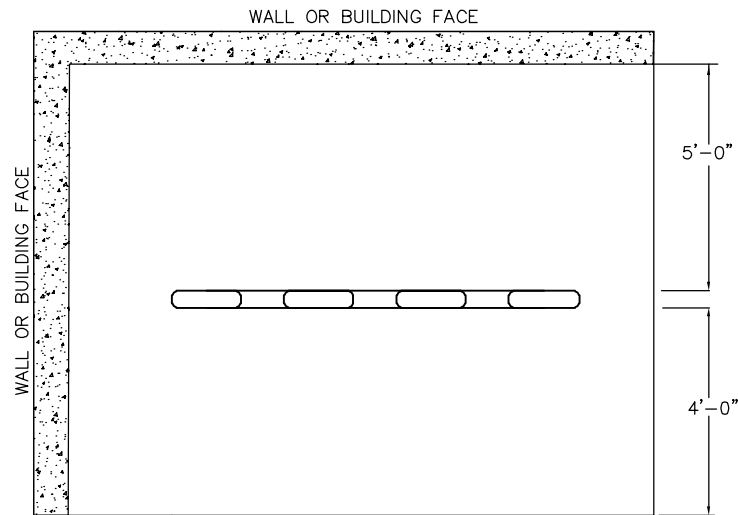
NOT TO SCALE



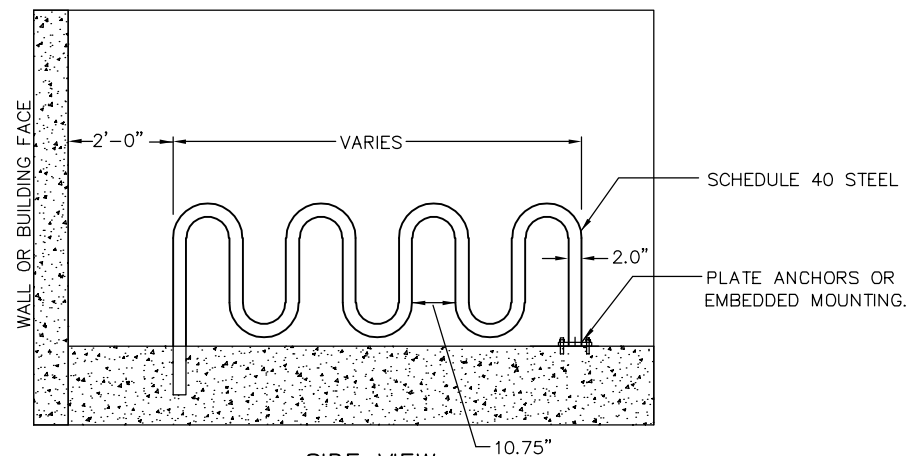
TOWN OF PINEVILLE
LAND DEVELOPMENT
STANDARDS

INVERTED "U" RACK FOR
BICYCLE PARKING

STD. NO.	REV.
50.20	



PLAN VIEW



SIDE VIEW

NOT TO SCALE

NOTES:

1. BIKE RACKS SHOULD BE INSTALLED AS PER MANUFACTURER'S RECOMMENDED INSTALLATION PROCEDURES.
2. ALTERNATIVE BIKE RACKS OR LOCKERS MAY BE USED BUT ARE SUBJECT TO APPROVAL BY THE TOWN ENGINEER.
3. ALL DIMENSIONS SHOWN ARE MINIMUM.



**TOWN OF PINEVILLE
LAND DEVELOPMENT
STANDARDS**

**WAVE RACK FOR
BICYCLE PARKING**

8/1/19

STD. NO.	REV.
50.21	3

SPECIFICATIONS

POST DESCRIPTION

THE LIGHTING POST SHALL BE ALL ALUMINUM, ONE-PIECE CONSTRUCTION, WITH A CLASSIC TAPERED AND FLUTED BASE DESIGN. THE POST SHALL BE PROVIDED WITH (1) SPECIAL LOVELAND STYLE CROSSAM, FOR TWO FIXTURES AT 180° WITH 3" TENON.

MATERIALS

THE BASE AND FLUTED TAPERED CAST SHAFT SHALL BE HEAVY WALL, CAST ALUMINUM PRODUCED FROM CERTIFIED ASTM 356.1 INGOT PER ASTM B-179-95A OR ASTM B26-95. ALL HARDWARE SHALL BE STAINLESS STEEL ANCHOR BOLTS TO BE COMPLETELY HOT DIP GALVANIZED.

CONSTRUCTION

THE SHAFT SHALL BE DOUBLE WELDED TO THE BASE CASTING AND SHIPPED AS ONE PIECE FOR MAXIMUM STRUCTURAL INTEGRITY. THE SHAFT SHALL BE WELDED INSIDE THE BASE CASTING AT THE TOP OF THE ACCESS DOOR, AND EXTERNALLY WHERE THE SHAFT EXITS THE BASE. ALL WELDING SHALL BE PER ANSI/AWS.

DIMENSIONS

THE POST SHALL BE 12'-0" IN HEIGHT WITH A $\phi 17"$ BASE. THE SHAFT DIAMETER SHALL BE 5". AT THE TOP OF THE POST, AN INTEGRAL $\phi 3" \times 5"$ TENON WITH A TRANSITIONAL DONUT SHALL BE PROVIDED FOR LUMINAIRE.

INSTALLATION

THE POST SHALL USE FOUR, HOT DIP GALVANIZED L-TYPE ANCHOR BOLTS TO BE INSTALLED ON A 12" DIAMETER BOLT CIRCLE. A DOOR SHALL BE PROVIDED IN THE BASE FOR WIRING ACCESS. A GROUNDING SCREW SHALL BE PROVIDED INSIDE THE BASE OPPOSITE THE DOOR.

FINISH

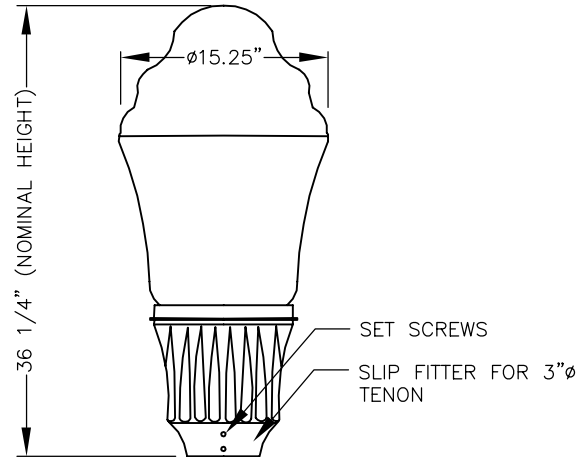
THE ENTIRE POST ASSEMBLY SHALL BE STANDARD HOLOPHANE BLACK.

LUMINAIRE

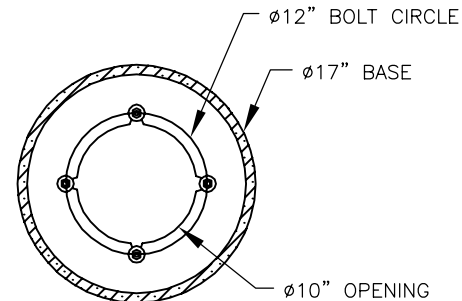
LUMINAIRE SHALL BE GRANVILLE PREMIER II LED 2 SERIES

DECORATIVE POSTS AND FIXTURES SHALL BE MANUFACTURED BY:

HOLOPHANE
214 OAKWOOD AVENUE
NEWARK, OHIO 43055

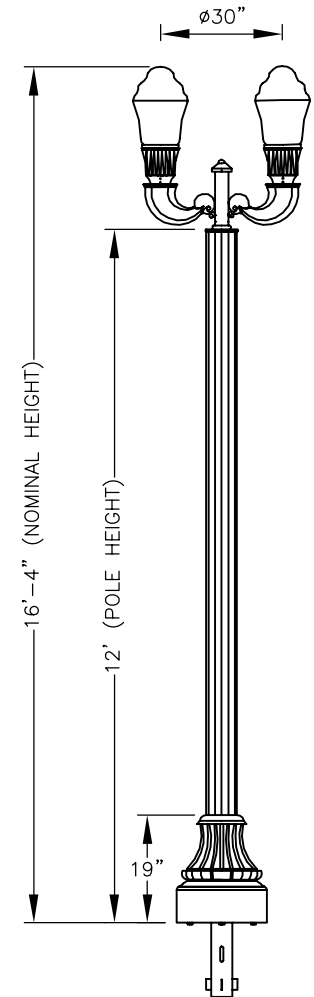


LUMINAIRE DETAIL
HOLOPHANE CATALOG #:
GPD2 SERIES



ANCHORAGE DETAIL

DO NOT USE TO SET ANCHOR BOLTS
CONTACT HOLOPHANE FOR TEMPLATE



DECORATIVE POLE DETAIL
HOLOPHANE CATALOG #S
POLE: WDA12F5J17P17DBBBK
ARM: LV30/2T3CABKH RFD47946



TOWN OF PINEVILLE
LAND DEVELOPMENT
STANDARDS

12' DECORATIVE LIGHTING POST

2/29/20

STD. NO.	REV.
50.22A	4

SPECIFICATIONS

POST DESCRIPTION

THE LIGHTING POST SHALL BE ALL ALUMINUM CONSTRUCTION WITH A DECORATIVE FLUTED CAST ALUMINUM BASE. THE PATENTED SITELINK SHAFT PROFILE SHALL CONSIST OF FOUR MOUNTING TRACKS AND CHANNELS. THE POST SHALL BE PROVIDED WITH (1) POST-TOP MEDIUM BALL FINIAL-GOLD FINISH, (1) SL SIDE-MOUNTED BOSTON HARBOR 96" ROADWAY ARM, (2) SL SIDE-MOUNTED LOVELAND CROSSARMS, (3) GASKET AND GROMMET KITS.

MATERIALS

THE BASE AND FLUTED TAPERED CAST SHAFT SHALL BE HEAVY WALL, CAST ALUMINUM PRODUCED FROM CERTIFIED ASTM 356.1 INGOT PER ASTM B-179-95A OR ASTM B26-95. THE STRAIGHT SHAFTS SHALL BE EXTRUDED FROM ALUMINUM, ASTM 6061 ALLOY. ALL HARDWARE SHALL BE STAINLESS STEEL. ANCHOR BOLTS TO BE COMPLETELY HOT DIP GALVANIZED.

CONSTRUCTION

THE SHAFT SHALL BE DOUBLE WELDED TO THE BASE CASTING AND SHIPPED AS ONE PIECE FOR MAXIMUM STRUCTURAL INTEGRITY. THE SHAFT SHALL BE WELDED INSIDE THE BASE CASTING AT THE TOP OF THE ACCESS DOOR, AND EXTERNALLY WHERE THE SHAFT EXITS THE BASE. ALL WELDING SHALL BE PER ANSI/AWS.

DIMENSIONS

THE POST SHALL BE 30'-0" IN HEIGHT WITH A 17" DIAMETER BASE. THE SHAFT DIAMETER SHALL BE 5.25". AT THE TOP OF THE POST, A INTEGRAL $\phi 3 \times 3$ " TENON WITH A TRANSITIONAL DONUT AND MODIFIED PLATE FOR MOUNTING THE BRF FINIAL.

INSTALLATION

THE POST SHALL BE PROVIDED WITH FOUR, HOT DIP GALVANIZED L-TYPE ANCHOR BOLTS TO BE INSTALLED ON A 12" DIAMETER BOLT CIRCLE. A DOOR SHALL BE PROVIDED IN BASE FOR ANCHORAGE AND WIRING ACCESS. A GROUNDING SCREW SHALL BE PROVIDED INSIDE THE BASE OPPOSITE THE DOOR.

FINISH

THE ENTIRE ASSEMBLY SHALL HAVE A STANDARD HOLOPHANE BLACK FINISH.

LUMINAIRE

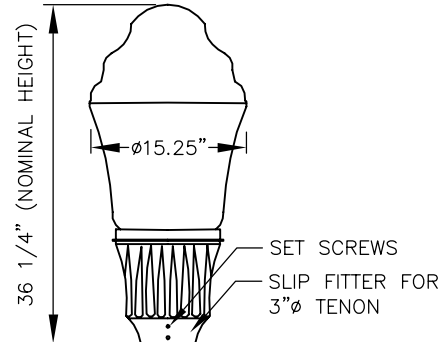
AUTOBAHN LED ROADWAY - LARGE SERIES
GRANVILLE PREMIER II LED 2 SERIES

DECORATIVE POSTS AND FIXTURES

SHALL BE MANUFACTURED BY:

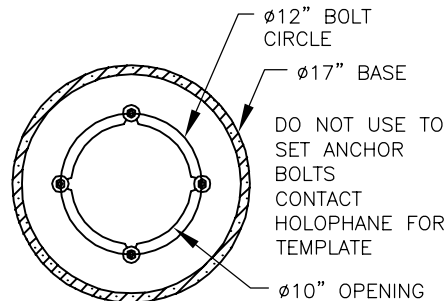
HOLOPHANE

214 OAKWOOD AVENUE
NEWARK, OHIO 43055



LUMINAIRE DETAIL

HOLOPHANE CATALOG#:
GPD2 SERIES



ANCHORAGE DETAIL

HOLOPHANE CATALOG #S

POLE: WDA30L6J17P07-MODBK-(3)KXXXY RFD280401

ANCHOR BOLTS: AB-27-4

POST TOP FINIAL: BRFGH RFD280401

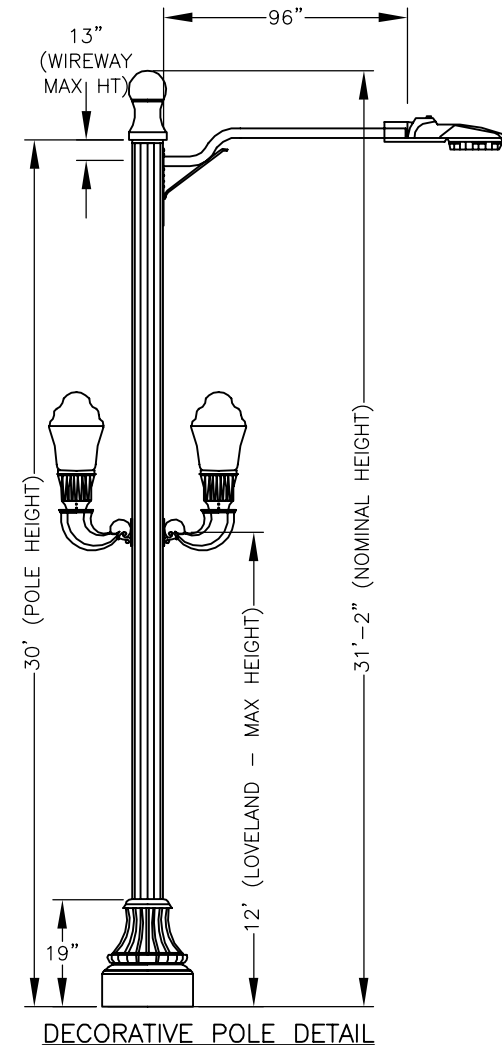
ROADWAY ARM: SLBHC96/1LSBOL68BKH RFD280401

MID-POST ARM: (2)SLLVBO(3T3)L68BKH RFD280401

GASKET/BROMETT KITS: (3)SLGAGMKIT

FIXTURE: MGLED44KASWLHPKPCL1P7US

FIXTURE: (2)GPD2P2040KASMBK5NNUHPCS



DECORATIVE POLE DETAIL



TOWN OF PINEVILLE
LAND DEVELOPMENT
STANDARDS

30' DECORATIVE LIGHTING POST

2/29/20

STD. NO.	REV.
50.22B	4