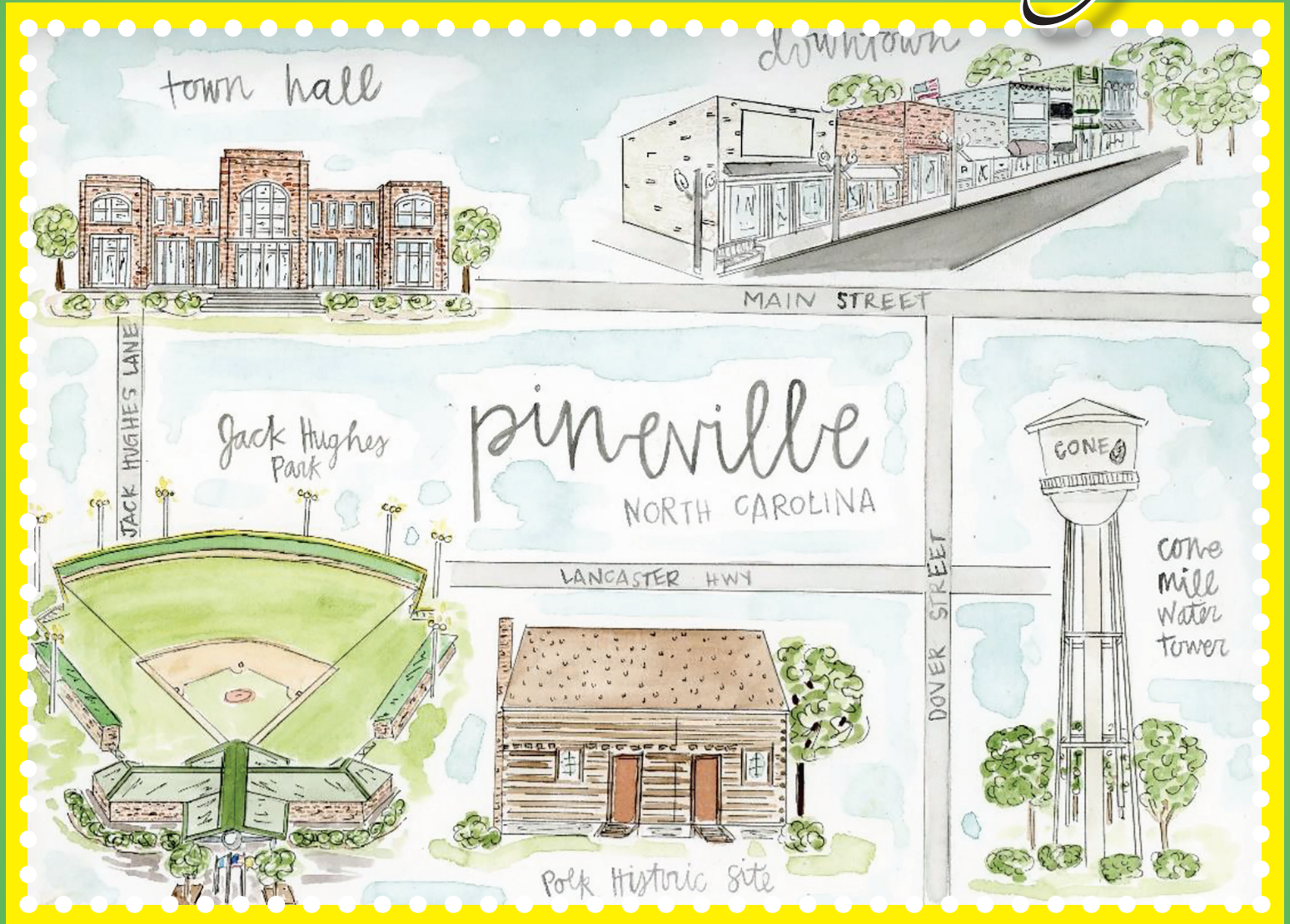


# Pineville Today



July • August • September 2022

# Pineville Town News

## What's Happening...

It's been a busy spring for Council. The FY23 has been adopted with no tax or electric fee increases again this year! That is 5 years since a tax increase. The total budget is \$34.6 million and accomplishes the Strategic Goals set by Council earlier in the year. The General Fund is \$16.8 million, Electric Fund is \$14.4 million, and Telephone/Internet Fund is \$3.2 million.

Council has also once again invested in mobility and transportation improvements with new sidewalks, widening of Lowry Street, and trails and greenways, all in an effort to connect neighborhoods to commercial areas. This will give people an added choice to get around town.

The Town is anticipating the opening of its new Town Hall, scheduled to open for its employees in mid-August. Construction work is on schedule and we look forward to serving you from our new offices. With that update, we are also proud to have a new library being built on the first floor of our new Town Hall, scheduled to open this Fall. The new library will make a great addition to our Town.

Plans are still ongoing with the design of a greenway connection and bridge from McCullough to Jack Hughes Park. We are also getting closer to a decision on how to develop the Cone Mill site. The Town received many good ideas and suggestions for the use of that area from residents at a recent charette. These suggestions were presented to Town Council in June.

We want this newsletter to be valuable to you so I encourage you to offer your feedback or suggestions on articles that you would like to see included in the quarterly newsletter. Please send your submissions to our Town Clerk Lisa Snyder at [lsnyder@pinevillenc.gov](mailto:lsnyder@pinevillenc.gov).

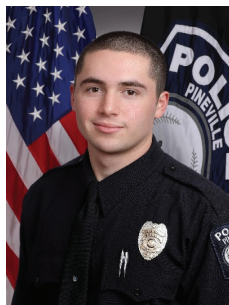
**Thank you for being a part of our great community.** You are what makes Pineville a special place to live, work, and enjoy. We are here to provide you great services and are looking forward to seeing you at our new location this summer.

Town Manager  
Ryan Spitzer



**WELCOME!**

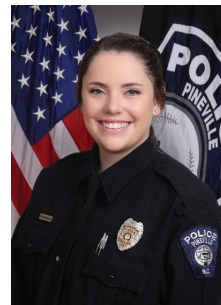
New Officers  
to the  
Pineville Police  
Department



Officer Anthony Gonzales



Officer Eleazer Lopez, Jr.



Officer Shelby Basham

## THIRD QUARTER HOLIDAYS

July 4th • Independence Day



September 5th • Labor Day



All Town Offices will be closed.

## COUNCIL MEETINGS

July 12th

August 22nd + Work Session 6pm

September 14th

All Council meetings are held  
at 6:30 pm at the Hut unless  
otherwise noted on our  
Town's website.

## Inside this Issue

Manager's Minute .....	1
Public Service .....	2
Parks and Recreation .....	3-8
Special Events .....	9-10
Community Central .....	11



## UPDATED TOWN OF PINEVILLE ORDINANCES FEE INCREASES

The Town of Pineville reviews ordinances periodically to maintain best practice within our community.

**These ordinances include:** Handicapped parking (updated to match the State of North Carolina's fine amount) and the Noise Ordinance (updated to remain consistent with surrounding towns; First offense: \$100, Second offense: \$250, Third offense: \$500, Fourth offense: \$750, Fifth and Subsequent offenses: \$1,000).

Violation of Handicapped Parking	\$250
Noise Violation	
First offense	\$100
Second offense	\$250
Third offense	\$500
Fourth offense	\$750
Fifth and subsequent offenses	\$1,000

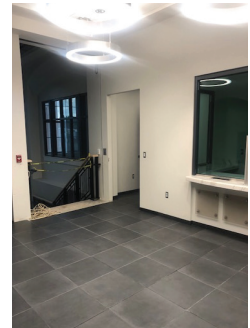
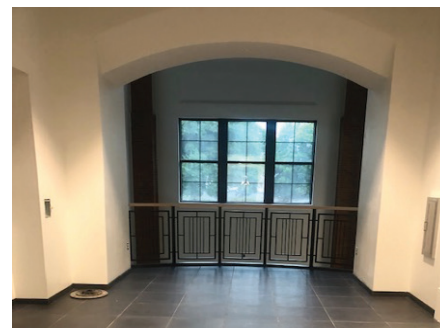
## CODE ENFORCEMENT NEWS

Summer is here, and as you get out and enjoy it, please remember to keep your grass under 12 inches high. If you get a new mower for your grass, you might want a place to store it. Please reach out to the Planning and Zoning Department about accessory structures, as we can help. Finally, if you have any bulky items you want to get rid of, please contact Waste Pro to ensure that they will be able to pick up the items that you put out for pickup; such as grass clippings (should be bagged with a 5-bag limit) and limbs and brush should be separate from other waste (no longer than 3 feet, and not over 3 inches in diameter) or no more than 4 cubic yards (the size of a small truck bed). Additional yard debris exceeding the limits above will be collected the following week. **Residents please note: Disposal of debris from contracted work is the responsibility of the property owner.**



## THE NEW TOWN HALL WILL BE OPENING SOON!

Here is a sneak peek of what it looks like.



We are looking forward to serving you in the coming weeks. Follow our Facebook page and Town website for more information as the move-in date approaches.

## WATER NEWS

Sewer overflows can happen at any time which can introduce harmful bacteria such as fecal coliform to our streams. High levels of this bacteria can lead to fish kills, stressed aquatic life, and can be dangerous to human health. Overflows are accompanied by a rotten egg odor and they may also produce white fungus. It is important that we do our part to help prevent sewage from reaching streams by:

- Properly disposing of grease in the trash, and not down the drain, which can cause blockages in the sewer lines
- Repairing leaking private sewer lines and septic systems immediately
- Reporting sewer overflows to 311



Looking for other ways to protect our waterways? You can volunteer with Charlotte-Mecklenburg Storm Water Services in our new Adopt-A-Drain Program in Pineville! Get involved right in your own community by looking after a nearby storm drain, checking for pollution, and keeping it clear of debris. Signing up and participating is easy, check out our Adopt-A-Drain page for more details.



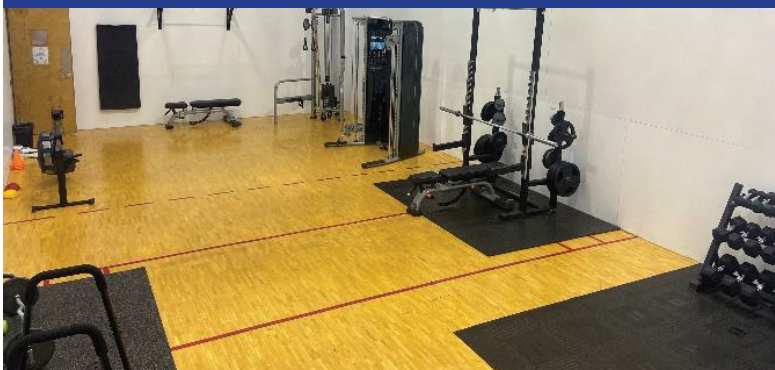
# Parks & Recreation

**OPEN GYM** Each resident may bring 1 guest during open gym hours (check website, Facebook or call the Community Center 704-889-2400). The fee is \$5.00 per guest.



## FITNESS CENTER, GYM, & INDOOR TRACK

CHECK OUT OUR UPDATED FITNESS CENTER!



### ..... ATTENTION PINEVILLE RESIDENTS .....

Taxpaying Pineville residents who live within the city limits may use the Belle Johnston Community Center for free. Residents will need to provide a photo ID with current address and a recent utility bill to get a membership card.



### BELLE JOHNSTON COMMUNITY CENTER

1000 Johnston Drive • Pineville, NC 28134 • 704-889-2400

#### HOURS OF OPERATION

MON-THURS: 7am-7:45pm FRI: 7am-5:45pm

SAT: 10am-4:45pm • SUN: 1pm-4:45pm



**Give Your Diet a Berry Boost** - If you do one thing this summer to improve your diet, have a cup of mixed fresh berries - blackberries, blueberries, - or - strawberries.

**Get Dirty and Stress Less** - To improve your stress level, plant a small garden, cultivate a flower

box, or if space is really limited, plant a few flowerpots - indoors or out.

**Floss Daily** - You know you need to, now it's time to start.

**Get Outside to Exercise** - Pick one outdoor activity, like going on a hike, taking a nature walk, playing games, such as tag with your kids, cycling, roller blading, or swimming.

**Be Good to Your Eyes** - To protect your vision at work and at play, wear protective eyewear when outdoors.

**Pineville**  
PARKS AND RECREATION

**SPLASH PAD HOURS**

**MONDAY - FRIDAY**  
**10:00AM - 7:00PM**

**SATURDAY - SUNDAY**  
**10:00AM - 6:00PM**

## GROUP FITNESS

### Cardio Funk with Lem Houston

JOIN THE FUN AT THE  
BELLE JOHNSTON  
COMMUNITY CENTER

» Tuesdays 6:30pm - 7:30pm  
\$5.00 drop-in fee

Fun, high energy, cardio dance with a hip hop influence.  
All levels welcome



# Parks and Recreation



## BOOTCAMP WITH LIA

**BOOTCAMP DAYS/TIMES:**  
MON./WED./FRI.  
5:15AM - 6:15AM  
**PRICING**  
1ST CLASS - FREE  
SINGLE CLASS - \$10  
5 CLASSES - \$40  
UNLIMITED MONTHLY - \$99

Pineville Lake Park  
1000 Johnston Dr.  
Pineville, NC 28134  
For More Info. 704-451-6790  
IGWOODS4610@GMAIL.COM

## YOGA CLASSES

### June

#### Mondays at 3:45pm - Gentle Flow Yoga

Great for beginners, this class helps you unwind and find balance to kick off your week.

#### Thursdays at 5:30pm - Deep Stretch

An ideal space for those curious about yoga and anyone interested in balance and flexibility.

#### No Classes in July

### August

#### Mondays at 3:45pm - Gentle Flow Yoga

#### Thursdays at 5:30pm - Deep Stretch



### JOIN NOW

\$5.00 Drop In

Classes are at the Hut

413 Johnston Dr.

Questions? Email

Rachel@ignitemke.com



## GET FIT WITH CT SCULPT



- Personal Training
- Small Group Workouts
- Mom and Me Fitness Series

Email [ctsculpt@gmail.com](mailto:ctsculpt@gmail.com) for more information

How will you get moving today?



## SENIOR EXERCISE

THE HUT - 413 JOHNSTON DRIVE  
[WWW.FITSENIORS.ORG](http://WWW.FITSENIORS.ORG)

WHY SHOULD I JOIN OR ATTEND AN EXERCISE PROGRAM? THERE ARE MANY REASONS WHY OLDER ADULTS NEED REGULAR EXERCISE. EXERCISE REDUCES AND ELIMINATES MANY OF THE HEALTH CONCERNS THAT COME WITH AGING. REGULAR ACTIVITY ALSO HELPS TO MAINTAIN AND REDUCE THE LOSS OF BONES AND MUSCLES DUE TO AGING. THERE IS A CORRELATION BETWEEN DAILY PHYSICAL ACTIVITY AND THE REDUCTION OF FEELING OF ANXIETY AND DEPRESSION IN OLDER ADULTS. BESIDES THE SOCIAL ASPECT OF MEETING NEW PEOPLE, OCCASIONALLY WE HAVE OTHER ACTIVITIES. THIS QUARTER WE HAD A NUTRITIONIST PROVIDE OUR GROUP WITH GREAT INFORMATION THEY COULD USE TO MAKE BETTER CHOICES AT THE GROCERY STORE.

THERE IS A CLASS THAT FITS EVERYONE'S NEEDS: CHAIR YOGA/STRETCH & BALANCE/STRENGTH & BALANCE/ CARDIO FIT - CONTACT LORRAINE HAYNES: [SENIORFIT65@GMAIL.COM](mailto:SENIORFIT65@GMAIL.COM)



## TAI CHI & KUNG FU CLASSES

### Summer Special - 50% your first month

Manage stress, boost confidence, improve fitness, develop self-discipline, gain lasting peace of mind, learn self-defense and have fun.

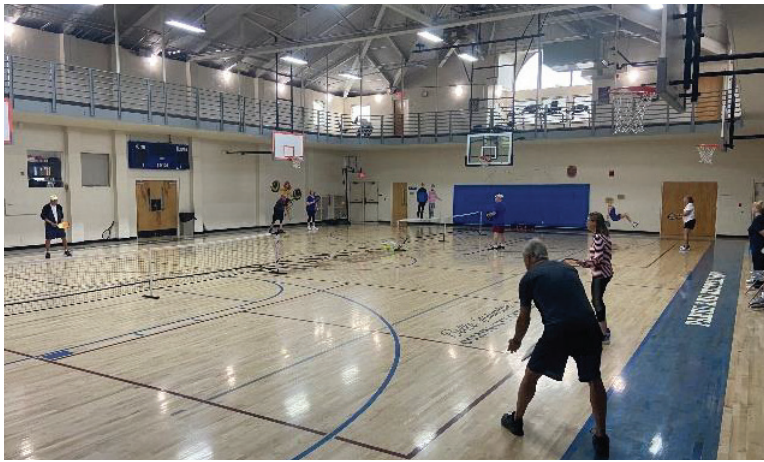
Healthy Outdoor Classes at Pineville Lake Park  
Tuesday & Thursday Evenings/Saturday Mornings  
Ages 8 to 98 / Tuition: \$147-\$197 per month  
Family and Military Discounts Available

To schedule your free introductory class, call or text us at 704-572-6854  
or email us at [info@thepeacefulgragon.com](mailto:info@thepeacefulgragon.com)





# Parks & Recreation



## PICKLEBALL

Belle Johnston Community Center Gym – 1000 Johnston Drive  
Ages 12 & up. You must bring your own paddle. Balls will be provided.

Monday & Friday: 9am-12pm • Wednesday: 1:30pm-4:30pm

Cost: Free to Pineville Residents (must show resident card)  
\$2.00 Non-Resident Fee

**You must sign up to play at this website:**

**[www.SignUpGenius.com/go/30E0A4BAEA62AA0FB6open](http://www.SignUpGenius.com/go/30E0A4BAEA62AA0FB6open)**

Last day for Mon/Wed/Fri Pickleball will be June 17th.

We will start back on August 22nd. We will offer Saturday Pickleball starting on June 25th (10:15am-1:00pm) through August 13th. Limited to 12 players per day.



## FALL ADULT BASKETBALL LEAGUE

**Registration:** July 5th - Aug. 26th, 2022.  
Team Registration form is available at [www.pinevillenc.gov](http://www.pinevillenc.gov)

or Belle Johnston Community Center. Register at Belle Johnston Community Center, mail to PO Box 249, Pineville NC, 28134, or email to [ehamilton@pinevillenc.gov](mailto:ehamilton@pinevillenc.gov).

**Registration Fees:** \$450 per team (does not include uniforms)  
Games played on Mondays & Thursdays. For more info, call 704-889-2400.



Pineville has a lot to offer its residents, from shopping, parks, greenways, restaurants and entertainment.  
**PLEASE SUPPORT OUR LOCAL BUSINESSES!**

## YOUTH ACTIVITIES FALL YOUTH SOCCER

(Co-Ed Ages: 3-11)

Registration: July 5th – Aug. 8th. Registration form is available at [www.pinevillenc.gov](http://www.pinevillenc.gov) or Belle Johnston Community Center. Register at Belle Johnston Community Center, mail to PO Box 249, Pineville NC, 28134, or email to [ehamilton@pinevillenc.gov](mailto:ehamilton@pinevillenc.gov).

Registration Fee: \$50 Pineville resident (must show proof of residency), \$75 non-resident. Price includes uniform jersey, shorts, socks, and trophy.

**VOLUNTEER COACHES ARE NEEDED FOR EACH TEAM!!!**

For more information call 704-889-2255.



## SAVE THE DATE: PINEVILLE YOUTH BASKETBALL

Co-Ed Ages: 5-12

Registration: October 3rd – November 4th

????????

## CREATE-A-CLASS

**Do you have a special interest that you would like to share with others in a class?**

**Do you know someone who can share an interesting subject or craft?**

**Contact Heather Creech, our Recreation Program Coordinator, at 704-889-2400.**

????????





## BASEBALL, SOFTBALL & T-BALL - Registration Opens July 1st

Check out our website [www.pcaasports.org](http://www.pcaasports.org) to register online. Live walk-up registration is at the ball fields located next to Pineville Elementary School. Don't delay. Get your child registered today. Evaluations for Baseball are August 6th, and Softball are July 30th. Pineville Registration Fees: Pineville

municipal residents are eligible for discounted registration fees. These discounts are provided for residents of the municipality of Pineville, so you might have a Pineville address and not be ineligible for these discounts. Please check the map to view the boundaries and determine your eligibility. All Pineville residents must show proof of residency to receive the resident rate and must register in person. BRIEF DESCRIPTION: Pineville Community Athletic Association (PCAA) offers Cal Ripken and Babe Ruth Baseball and CharMeck Softball. We are currently offering baseball for children ages 4-18 and softball for ages 6-18. We field- challenge all-star teams at all divisions, except T-Ball, and every division enjoys a post-season tournament (not including T-Ball).

DIVISION	AGES	PITCHING/HITTING	FIELD
T-Ball	4-5	Players hit from tee. Everyone bats every inning.	50' bases
Rookie I / II Machine Pitch	6 - 8	5 machine pitches or 3 strikes. No steals	60' bases
Minors	9-10	Player pitch. No balk or lead-offs.	60' bases, 46' mound
Majors/70	11-12	Player pitch. Balks after 1 warning, steal any time.	70' bases, 50' mound
Legends 14U	13 - 14	Player pitch. Major league baseball rules	90' bases, 60' mound
Legends 16U	15-16	Player pitch. Major league baseball rules	90' bases, 60' mound
Legends 18U	17-18	Player pitch. Major league baseball rules	90' bases, 60' mound
Girls Softball 6U	6U	Coach Pitch/Tee	60' bases
Girls Softball 8U	8U	Combination Player/Coach pitch, 8U softball rules.	60' bases
Girls Softball 10U	10U	Player pitch, 10U softball rules.	60' bases
Girls Softball 13U	13U	Player pitch, 13U softball rules	60' bases
Legends Softball	14+	Player pitch, 18U softball rules	60' bases

\*Baseball League age is the age of your child on May 1, 2022 for the fall season.

\*Softball League age is the age of your child on January 1, 2022 for the fall season.

## SLIME MAKING CLASSES



Camryn is a young entrepreneur who loves slime and is passionate about teaching others how to make their very own. This fall, Camryn's Slime Shoppe will be offering 3 Slime Making classes. During this 1-hour class, each student will make their own slime with Camryn, step-by-step. Afterwards, they will have an opportunity to customize their

slime by selecting colorings, mix-ins, and scents from Camryn's Slime Bar. This is sure to be a slimetastic time and is designed for ages 5 - 13. Please come dressed to get a little messy and to have some fun. All supplies are included and a little clean-up help will be required afterwards. **All class times are 6pm-7pm.**

**Dates: September 14, 2022 - Fluffy Slime**

**October 26, 2022 - Glow in the Dark Slime**

**November 16, 2022 - Clear Slime**

To register visit: [www.camrynsslimeshoppe.com](http://www.camrynsslimeshoppe.com)

(\$10 Pineville Resident/ \$15 Non-Resident)

**Coupon for Pineville Residents: PVILLERES**

To learn more about Camryn's Slime Shoppe visit:

**website: [www.camrynsslimeshoppe.com](http://www.camrynsslimeshoppe.com)**

Instagram: @camryns\_slimeshoppe

Facebook: @camrynsslimeshoppe

BE S.L.I.M.E. - Savvy, Loving, Innovative, Mindful & Empowered



ONLY \$10 per 1 hour weekly class, prepay or pay weekly. No contracts.

\*\*\$10 Annual registration fee

[ConsciousWarriorClt.com](http://ConsciousWarriorClt.com)



Ages 5 and up.

**PARENTS: Join with your child and receive free registration!**



# Parks and Recreation



## LEARN TO RIDE EDUCATIONAL SESSION



**SATURDAY**



**OCTOBER 1, 2022**

**9:00AM – 12:00PM**



**LOCATION:**

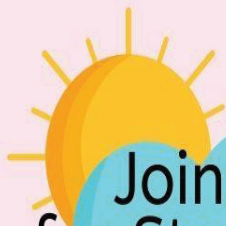
**PINEVILLE ELEMENTARY SCHOOL: SCHOOL BUS LOT**

**PRE-REGISTRATION REQUIRED.**

**TO REGISTER, CALL 704-889-2400.**



Mecklenburg County  
Park and Recreation  
*The Natural Place to Be...*



**Join us  
for Storytime**

**South County Regional Library  
Presents Family Storytime**

**Wednesdays at 9:30am**

**Pineville Lake Park (Large Shelter)  
Call 704-416-6600 for more info**



## Pre-School Open Gym

**Meet new friends and join the fun at the  
Belle Johnston Community Center Gym.**

**We provide everything!**

**Wednesdays 9:00 am - 12:00 pm**

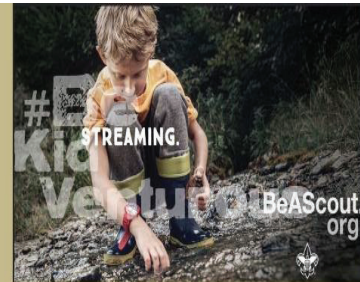
**For Ages 5 & Under/ Cost: Free**

**\*\*This is a Parent Supervised Activity\*\***

**Last day for pre-school open gym will be June 15. We will start back on Aug. 24**



BOY SCOUTS OF AMERICA



BOY SCOUTS OF AMERICA

**INTERESTED IN BEING A SCOUT?**

Chartered by:



Contact: Brady Drummond-Ryan

704-779-6245 or bradydryan@gmail.com

Meetings are Mondays 7:00pm-8:30pm

110 South Polk Street Pineville, NC 28134

[www.troop7pineville.org](http://www.troop7pineville.org)

For the past five years Scouting has been one of the best adventures of my life. I started at age 11 and now, as Senior Patrol Leader, I get to see the younger scouts experience the same challenges I did at the start. Not only has it been a blast, but it's also helped me become the person I am today.

I've had the ability to go on countless trips and experience many activities I would not have done otherwise. For example, I "camped" on the USS Yorktown for a weekend, where we all became closer than sardines in a submarine. I have camped with hundreds of other scouts and their troops each year and have always made new friends along the way. Also, I am preparing for a trip to the Florida National High Adventure Sea Base ([www.bsaseabase.org](http://www.bsaseabase.org)) next year.

Not only have I been blessed with many "once in a lifetime" opportunities, but I've also acquired some practical skills like knot tying, first aid, and orienteering, as well as life skills such as improved communication and leadership skills, along with proper planning/execution of tasks and activities. I think the most important thing Scouts has taught me is to make the best of every situation regardless of the outcome.

I love everything about Scouting to this day, and am always excited for the weekly meetings, as well as the amazing outings we get to go on. Scouting is really a one-of-a-kind organization that will change your life for the better, and I hope you choose to come join us on our adventures.

Yours in Scouting,  
Elliott Ballowe  
Troop 7 Senior Patrol Leader



## COOKIE DECORATING CLASSES



**Where:** Belle Johnston Community Center Classroom

**Fees:** \$15 resident of Pineville/ \$20 non-resident / **Ages 12+**

**Dates & Times:** All classes start at 6pm / 2 classes per month  
Please follow us for dates, registration info and cookie design each month on our Facebook page (PinevilleParksandRecreation) and Instagram (pinevilleparknrec).

Also, check out Be Good Cookies, LLC on Facebook for pictures of previous classes and home decorating parties.

## PAINT CLASSES

### MASTERPIECES BY YOU

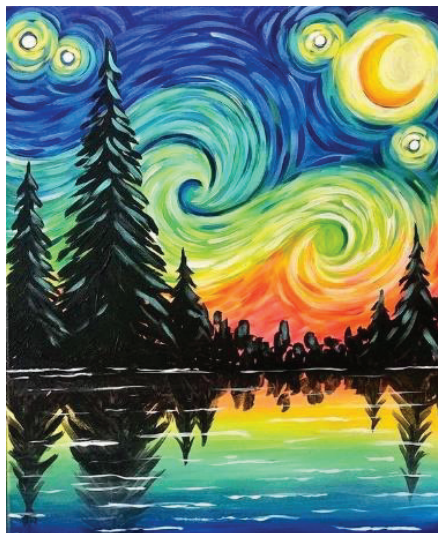
Paint your own masterpiece with instructor Sharon Csiszer. All classes will be held in the dining room at the Belle Johnston Community Center. Limited space available. All levels of artist are welcome to join us! Times: 1pm – 3:30pm

**Cost: \$10.00 resident of Pineville/ \$15.00 non-resident.**

Please stop by or call the Community Center to pay and register for this class. 704-889-2400.



Aug. 16th - Lighthouse  
Register By: August 9th



Sept. 20th – Trees  
Register By: September 13th

## POTTERY CLASSES



## FREE FAMILY CLAY SATURDAYS!

Parents and children come out to the Belle Johnston Community Center (100 Johnston Dr) and make “wet clay” Holiday themed projects! All workshops are 10:15am - 11:30am. Parents are not required but are encouraged to join your children!

Oct. 8th - Halloween

Nov. 12 - Thanksgiving

Dec. 17 - Winter

Pre-registration required by emailing [artsdelivered@gmail.com](mailto:artsdelivered@gmail.com) or texting 704-618-2222 with the subject FREE PPR and the appropriate months!



## AFTER SCHOOL ART PROGRAM

GRADES 2ND - 5TH

JOIN US AFTER SCHOOL FOR SOME POTTERY AND GAMES IN THE GYM  
WE WILL ALSO PROVIDE A SNACK BEFORE THE FUN STARTS

LOCATION: BELLE JOHNSTON COMMUNITY CENTER - 1000 JOHNSTON DR.

4 WEEK SESSION: TUESDAYS - SEPT. 13TH, 20TH, 27TH, OCT. 4TH

3:30PM - 5:30PM (DOORS OPEN UP AT 3:15PM) / COST: \$20

LIMITED SPACE AVAILABLE - CALL 704-889-2400 TO REGISTER NOW!



# Parks and Recreation

## SENIOR CITIZENS NUTRITION PROGRAM (SCNP)

### 5 W's to the Senior Citizens Nutrition Program

**WHO:** Individuals age 60 or older.

**WHAT:** SCNP is committed to promoting the nutritional health and well-being of

seniors in our community. Our program provides opportunities for a nutritional lunch, social engagement, and wellness activities.

**WHEN:** SCNP operates Monday through Friday, from 9am to 1pm. Daily activities and programming can be found on the monthly calendar.

**WHERE:** Belle Johnston Community Center

**WHY:** SCNP offers the opportunity to participate in meaningful engagement at no cost to the senior. If interested in learning more, please reach out to Shelia Douglas at (704-889-7444).

## DRIVE-THRU OR WALK-IN SENIOR EVENTS



We are inviting all seniors (60+) to celebrate **National Cream Filled Donut Day on Wednesday, Sept. 14th from (9:30am-1:30am).**

Come inside the Community Center or drive -thru and you will get a donut treat & a drink to

enjoy! You do not have to register for this Free event.



**Date: Saturday, September 24th**

**Time: 7:00am – 12:00pm (set up at 6:00am)**

**Cost: \$10.00 (limit one table per family)**

**Location: Under the Large Shelter at Lake Park**

Cleaning out your house? Need extra \$\$\$?

Bring your yard sale items to our annual Fall Yard Sale!

We take care of the advertising, signage, and we'll even have a charitable organization pick up your unsold items.

**Limited tables available.**

Come by the Community Center to pay and reserve your table!

**FIELD TRIPS** Due to popularity of field trips offered by Pineville Parks & Recreation, we will allow Pineville residents to sign up for the first week. If there are any seats left, we will then open it up to non-residents. Due to some allergies of other people in the vehicle, please refrain from wearing perfumes/colognes. Thank you! **There will be no field trips JUNE – AUGUST due to our Camp Pineville program.**

## SEPTEMBER FIELD TRIP



### Grandad's Apples & Such

This 100-acre family farm and apple orchard is located in Hendersonville, NC near Asheville. Select pre-picked apples fresh off the trees daily from their bins. At Grandad's Barn and Country Store, you will find a great selection of fall harvest decorations, apple peelers, apple bakers, and other apple gifts. They also have a bakery with hot cider donuts, apple pies, cookies, hot cider, apple cider slushies, and many other apple goodies to eat!

**Date: Thursday, September 29th**

**Fee: Free! Bring money for lunch and the Apple Orchard**

We will leave the Community Center at 8:30am, visit the orchard and then stop for lunch and return around 3:30pm. Please call 704-889-2400 to reserve your spot on the bus. Limited seats available.

**CONCESSIONS!**

**BEER GARDEN!**

**MECKLENBURG MUSCADINES**

<b><u>JULY HOME DATES</u></b>	<b><u>ALL-STAR SATURDAY</u></b>
<b>MONDAY, JULY 11TH</b>	<b>JULY 9TH</b>
<b>TUESDAY, JULY 12TH</b>	<b>HOME RUN DERBY &amp;</b>
<b>THURSDAY, JULY 14TH</b>	<b>ALL-STAR GAME</b>
<b>SATURDAY, JULY 16TH</b>	
<b>SUNDAY, JULY 17TH</b>	<b><u>LEAGUE TOURNAMENT</u></b>
<b>MONDAY, JULY 18TH</b>	<b>JULY 29TH &amp; JULY 30TH</b>
<b>TUESDAY, JULY 19TH</b>	
<b>THURSDAY, JULY 21ST</b>	

**All games are at Jack D. Hughes Park at 7pm!**  
**513 Main St. Pineville NC**  
**For more information visit: [oldnorthstateleague.com](http://oldnorthstateleague.com)**



## SPECIAL EVENTS

### FAMILY GAME NIGHT

Family game night will return in November! Please enjoy our outdoor concerts and movies in July, August & September! We will have our Fall Fest and Halloween Bash in October!

## SET SAIL WITH US!



You are invited to come and watch or try your hand at sailing radio-control model sailboats at Pineville Lake Park. We sail at the Pineville Lake Park Pond, 1000 Johnston Dr. Pineville, NC 28134. Please visit our website [QueenCityMYC.com](http://QueenCityMYC.com) for more information. Below are some of the particulars.

We race on most Wednesdays and Saturdays from 10:30AM to 12:30PM. Occasionally we will host intra-club and/or regional Regattas at our site too.



We race the Kyosho Seawind, Dragon Flite 95, and Soling's.

We opened racing to more than one boat class due to lack of Seawind spare parts and new sailboats. If you do not have a boat and would like to try your hand, or see if this is something you may like to try, we have club boats available for you.



MUSIC STARTS  
@ 7:00PM

MOVES START  
@ DUSK

### SCHEDULE OF EVENTS

JULY 8: KIDS IN AMERICA - 90's

JULY 15: GARRETT HUFFMAN - ACOUSTIC

JULY 22: CRUELLA PG-13

JULY 29: JAZZ GROUP PROJECT

AUGUST 5: JOHNNY SUSPECT - ACOUSTIC

AUGUST 12: DEPARTURE - JOURNEY COVER

AUGUST 19: GARRETT HUFFMAN - ACOUSTIC

AUGUST 26: JURASSIC PARK PG-13

SEPTEMBER 2: GARRETT HUFFMAN - ACOUSTIC

SEPTEMBER 9: RED DIRT REVIVAL - COUNTRY

SEPTEMBER 16: COREY STUART - ACOUSTIC

SEPTEMBER 23: SPACE JAM: A NEW LEGACY PG

## LIVE MUSIC & MOVIES ALL SUMMER LONG!

LOCATION: LAKE PARK  
1000 JOHNSTON DRIVE PINEVILLE, NC 28134



FOR MORE INFORMATION:  
CALL: 704-889-2400



# Pineville fall fest

FREE ADMISSION  
Friday & Saturday

## OCTOBER 14-15

**\*\*NEW LOCATION\*\***  
**JACK D. HUGHES PARK**  
**PINEVILLE, NC**

2022

## VENDOR & CONCESSIONAIRE APPLICATIONS AVAILABLE NOW!



## WHAT GOES IN RECYCLING?

This quick list answers what belongs in your recycling bin.

### YES

**PLASTICS**  
#1, 2, & 5



**MAGAZINES,  
MIXED PAPER,  
NEWSPAPERS,  
BOOKS**



**ALUMINUM,  
STEEL CANS,  
SCRAP METAL**



**GLASS**



**CARDBOARD**  
(broken down and dry)



### NO

**HOUSEHOLD TRASH**



**PLASTICS BAGS**



**BAGGED  
RECYCLABLES**



**FOODS & LIQUIDS**



**STYROFOAMS**



**BULKY WASTE**



## Don't Just Recycle, Recycle Right!