



Legend

Curb Ramps With Priorities

Ranking Priority

- A - Ramp Slope Non-Compliant
- B - Ramp is Missing
- C - Obstruction in Ramp
- D - Detectable Warning Non-Compliant
- E - Transition Non-Compliant
- F - Landing Non-Compliant
- G - Railroad/Bridge Transition
- Y - Compliant

Sidewalk

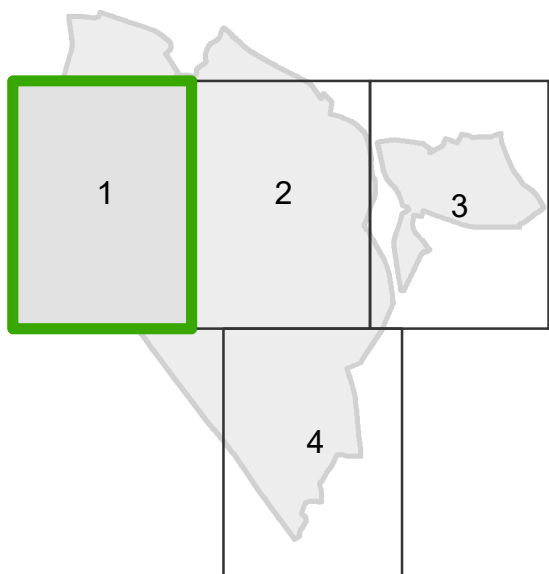
- Compliant
- Non-Compliant

- Park
- Hospital
- CMS School
- Church
- CATS Bus Stop
- Public Building Inspected
- Post Office
- Street Centerline
- Town Limit
- Parcel Boundary

100 Yard Buffer

- Government Buildings and Post Office
- Schools and Parks
- Hospitals and Churches
- Bus Stops

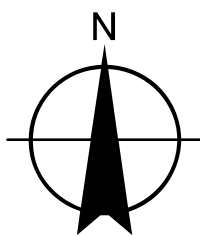
Note:
See Appendix A for Detailed Evaluation Results of Curb Ramps & Sidewalks



Transition Plan for Public
Rights of Way
Self-Evaluation of
Pedestrian Access Routes

LaBella Project No: 2192866
Date: January 2020

APPENDIX H
SHEET 1
Inventory Map



0 300 600 Feet

Sources:
Mecklenburg County GIS Aerials 2
Mecklenburg County GIS
Pineville PCS 2019

Legend

Curb Ramps With Priorities

Ranking Priority

- A - Ramp Slope Non-Compliant
- B - Ramp is Missing
- C - Obstruction in Ramp
- D - Detectable Warning Non-Compliant
- E - Transition Non-Compliant
- F - Landing Non-Compliant
- G - Railroad/Bridge Transition
- Y - Compliant

Sidewalk

- Compliant
- Non-Compliant

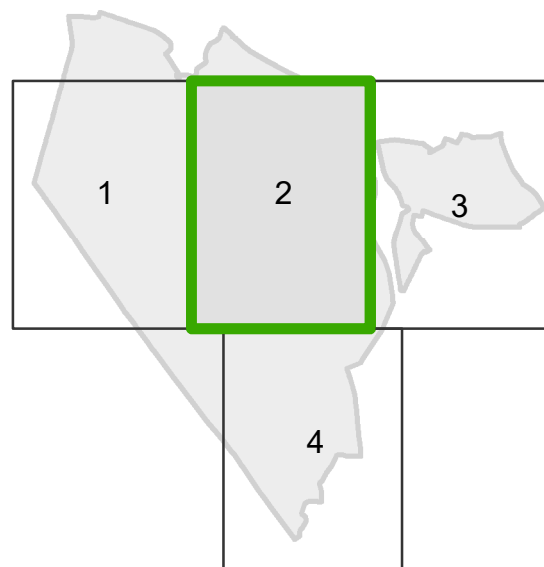
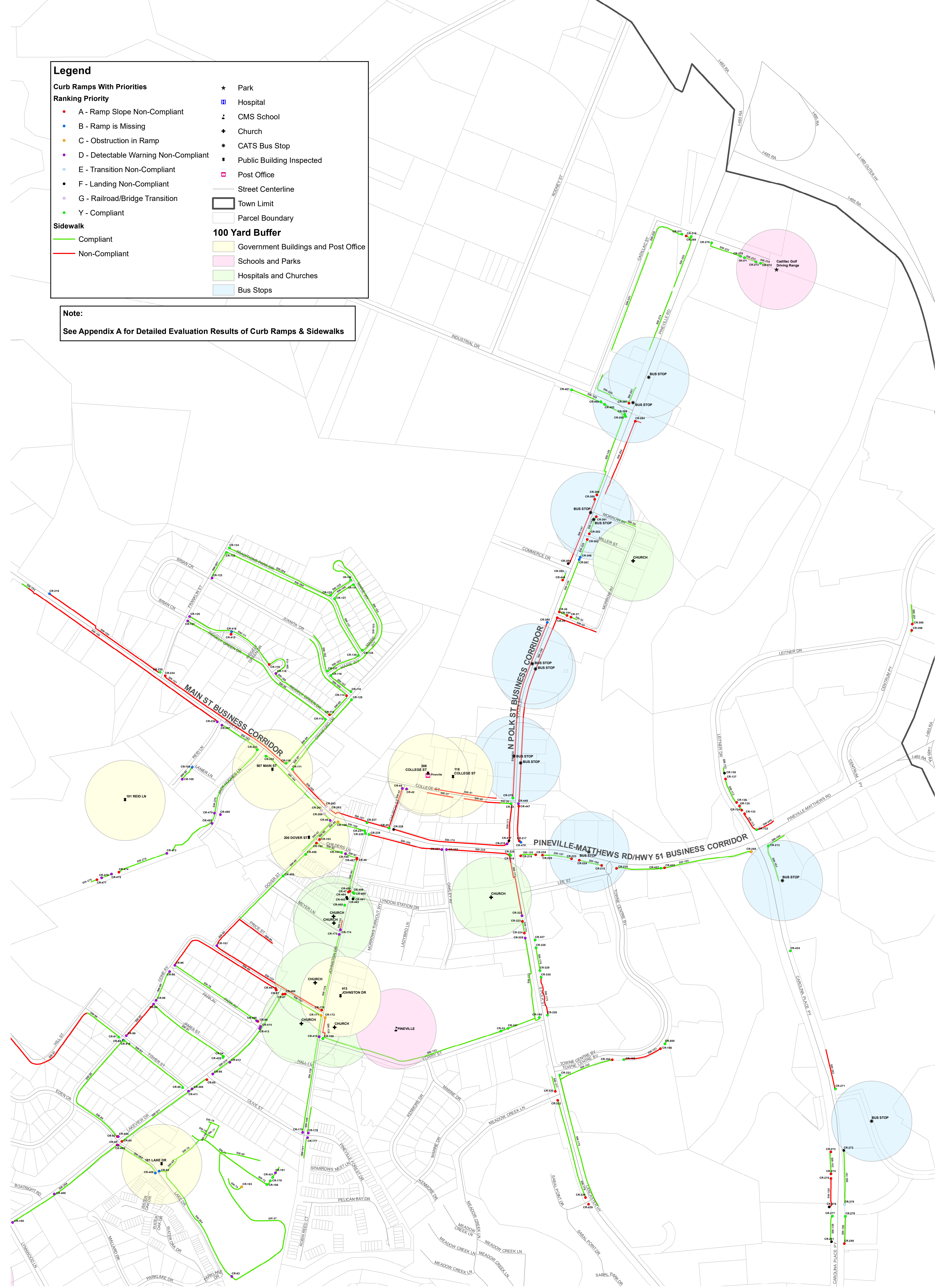
- Park
- Hospital
- CMS School
- Church
- CATS Bus Stop
- Public Building Inspected
- Post Office
- Street Centerline
- Town Limit
- Parcel Boundary

100 Yard Buffer

- Government Buildings and Post Office
- Schools and Parks
- Hospitals and Churches
- Bus Stops

Note:

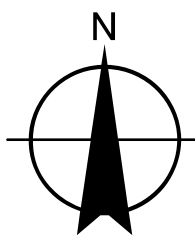
See Appendix A for Detailed Evaluation Results of Curb Ramps & Sidewalks



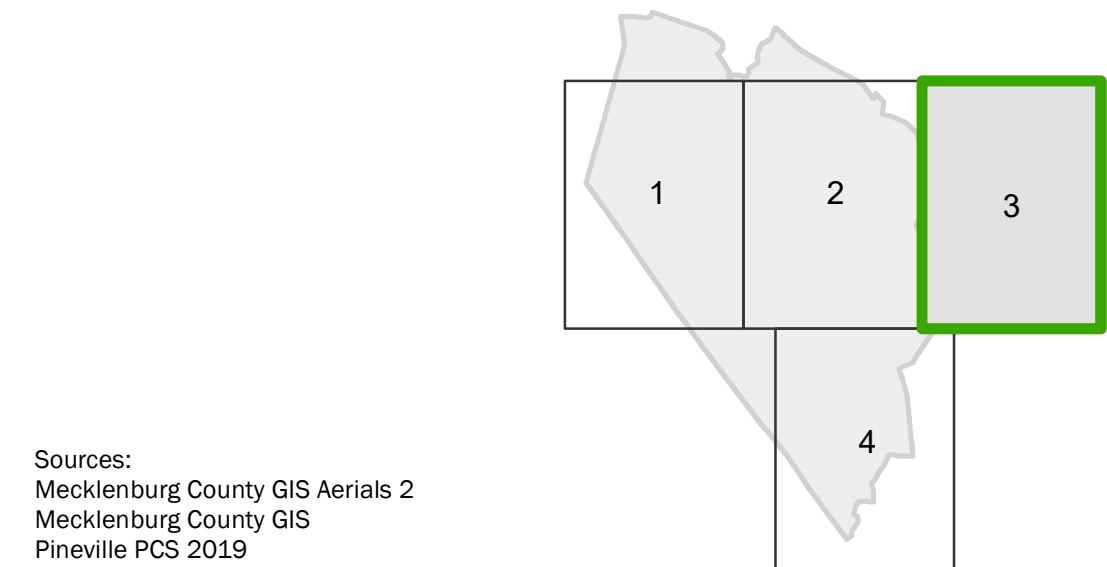
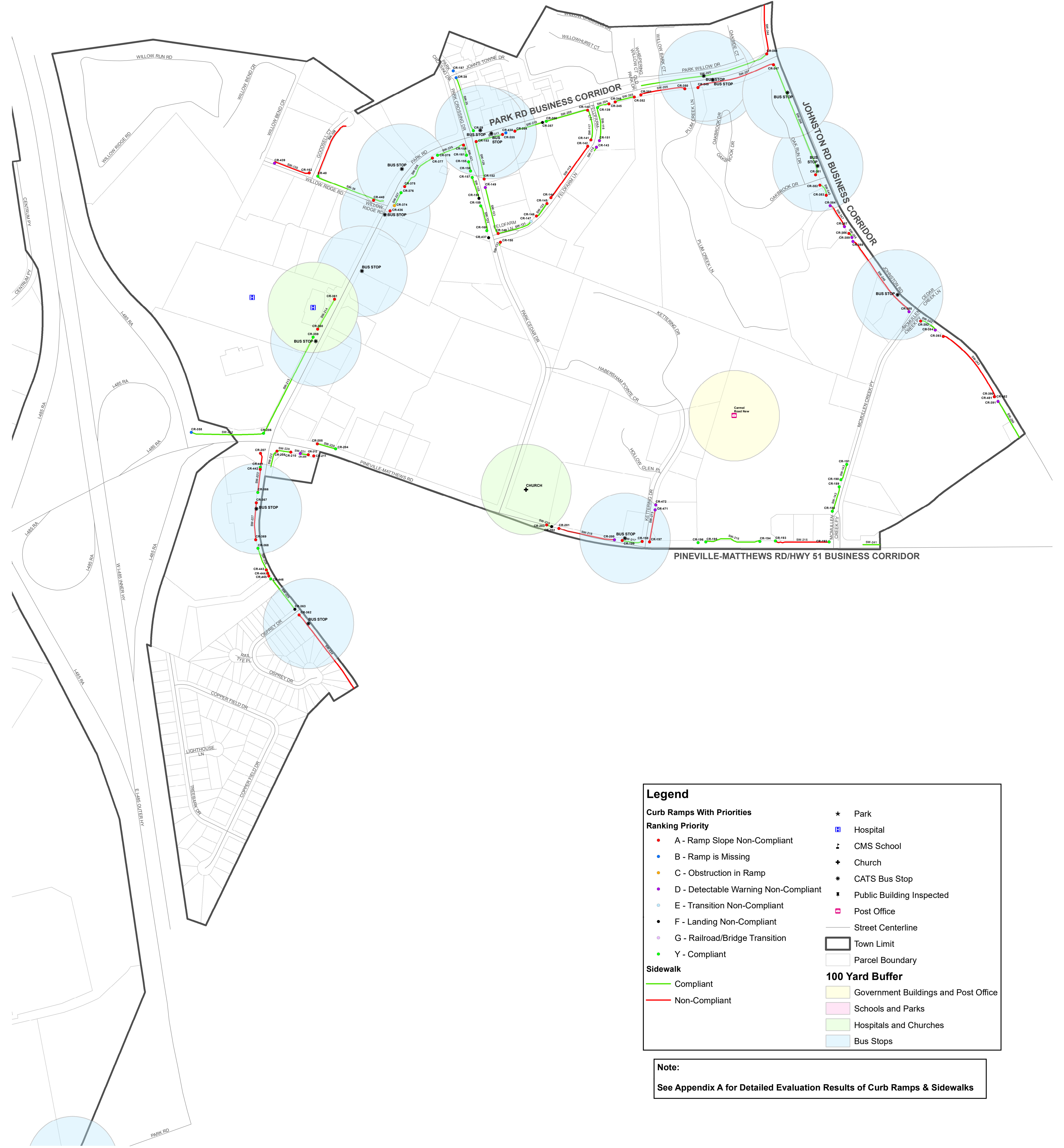
Transition Plan for Public
Rights of Way
Self-Evaluation of
Pedestrian Access Routes

LaBella Project No: 2192866
Date: January 2020

APPENDIX H
SHEET 2
Inventory Map

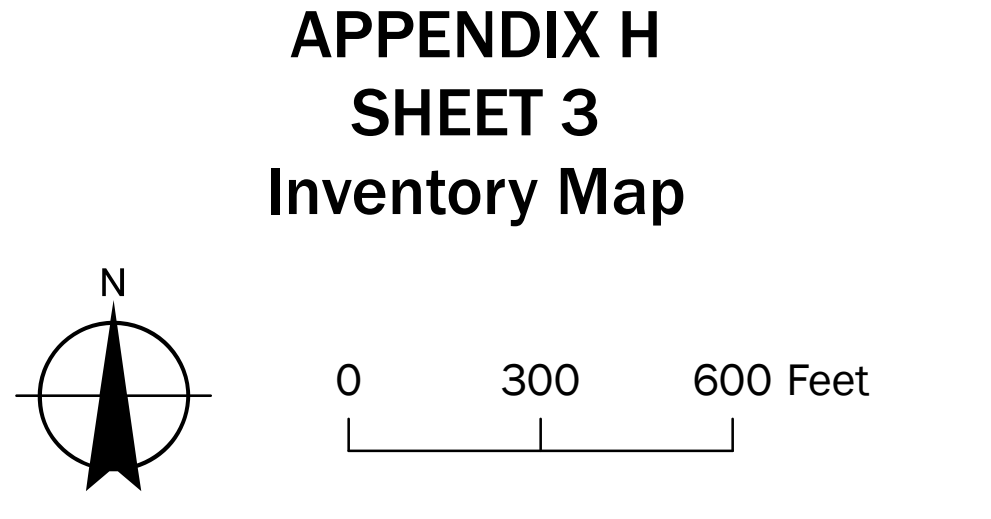


0 300 600 Feet



Transition Plan for Public
Rights of Way
Self-Evaluation of
Pedestrian Access Routes

LaBella Project No: 2192866
Date: January 2020



APPENDIX H
SHEET 3
Inventory Map

